

What If I Have Symptoms?

SELF-MONITORING IS MANDATORY

Students are required to check their temperatures and check for COVID-19 symptoms each day before coming to class, coming to campus, or using NSU facilities. If you exhibit symptoms, stay at home and contact your health care provider.

DON'T COME TO CAMPUS SICK

Please stay home if you have a fever, are exhibiting COVID-19 or flu-like symptoms, and/or are not feeling well.

- Additionally, please notify your professors that you are unwell and make arrangements to take your class(es) remotely if you are able and feeling up to it. Otherwise, your professors and college will work with you to manage your academic requirements.
- Also notify the NSU COVID-19 case manager at COVIDcase@nova.edu
- You must not return to classrooms or labs – or use NSU facilities (or even be around your friends) – until symptoms such as fever have disappeared and you meet the CDC guidelines for discontinuing self-isolation.
- Please check nova.edu/cv19 for details.

What If I Test Positive?

Students who receive a positive test result for COVID-19 – in addition to contacting their health care provider – must contact the NSU COVID-19 coordinator in their college or unit for immediate guidance and support. [\(See LINK for list of College COVID-19 Coordinators for students.\)](#)

- Your college COVID-19 coordinator will connect you with the NSU COVID-19 case manager or Environmental Health Services office so they can assess your particular case and review protocols and options available to you while you self-isolate.
- The COVID-19 case manager will ask you to complete an online form to capture information needed to better assist the local health department with its contact-tracing efforts.
- You are not to come to class, come to campus, use NSU facilities, or come into contact with others during this time.
- Please note: Many people who receive positive COVID-19 test results do not develop symptoms or, if so, they remain mild or moderate.
- Be assured: Our colleges, university administrators and professors are fully prepared to work with students who may test positive and to make sure that their health care and academic needs are addressed.
- NSU has many services lined up to help students who may need to self-isolate this fall, ranging from special room accommodations and meal deliveries for residential students, to tutoring and testing support and coaching, to advising and counseling for personal or academic needs.
- Each case is unique, so there is no one “formula” for the support services a student may need. We will customize our care for each case. It all starts with the NSU COVID-19 case manager and the college COVID-19 coordinator.
- NSU is uniquely positioned to be your partner and provide exceptional support, with our eight medical and health care colleges and their world-class experts, practitioners and educators, plus our COVID team and dedicated administrators who have prepared for this very contingency.

Please check nova.edu/cv19 for details.

What If I'm Asked to Quarantine?

It is possible that you might be contacted by the local Department of Health as part of the county's contact-tracing program. Positive cases are reported to the health department, and it then conducts interviews and assessments on each reported case. The department determines what other individuals may have been close to the infected person based on thresholds that assess proximity and duration of contact, as well as whether parties were using protective gear or measures at the time.

- If such contact occurs, the student will be instructed by the health department how to self-quarantine, typically for at least 14 days, and to remain separate from others to see if symptoms develop.
- If you are contacted by health officials, they will provide you with complete guidance on how to manage your self-quarantine and what to do should symptoms develop.

- Many people who have been asked to quarantine never develop any symptoms at all. So, if you feel up to it, you may be able to continue your classes remotely.
- Please also contact your professors, your college COVID-19 coordinator ([see list/link](#)) and the NSU COVID-19 case manager (COVIDcase@nova.edu) immediately if you are informed that you need to self-quarantine so they can work with you on ways to handle your classes, other NSU activities, and personal needs during this time.
- Please check nova.edu/cv19 for details.

What Are the Basic Rules I Need to Follow?

SELF-MONITORING IS MANDATORY

Students are required to check their temperatures and check for COVID-19 symptoms each day before coming to class, coming to campus, or using NSU facilities. If you exhibit symptoms, stay at home and contact your health care provider.

FACE COVERINGS ARE MANDATORY

Based on recommendations from the Centers for Disease Control and Prevention (CDC) and local ordinances, face coverings must be worn by all students, faculty, staff, visitors, and clinic patients while on campus or using any NSU facilities or grounds. To supplement your own face coverings, NSU will provide students with two free NSU face coverings, which will either be mailed to your home or distributed by your college or division sometime in August.

PHYSICAL DISTANCING IS MANDATORY

Maintain six feet (about two arm's lengths) between you and others. Signage across campus will help remind you. Like face coverings, physical distancing is mandatory. Outside of classes, where special arrangements and training have been implemented to ensure physical distancing, avoid group events or meetings and use Zoom when possible.

HANDWASHING AND DISINFECTING SURFACES IS A MUST

These actions continue to provide added safeguards against the spread of COVID-19. Frequent handwashing for at least 20 seconds with soap is recommended. If not possible, NSU has installed additional hand-sanitizing stations on campus. Classrooms will have a supply of disinfecting wipes but it is wise for students to also have their own personal cleaning supplies or "kit" to wipe down surfaces when you enter a work or classroom space – just as you may do when you go shopping or on errands. NSU will be adding extra cleaning and disinfecting procedures for all NSU facilities, with extra frequency in public spaces.

WE ARE ALL IN THIS TOGETHER

In addition to following these safety practices yourself — at all times — please help reinforce these practices among your friends and classmates. If you see someone at NSU who is not following the COVID-19 safety rules, please ask them to comply in the best interest of everyone's safety. If they do not cooperate, you have the option to use the SaferWatch app or to dial (954) 262-8999 to report the issue to a public safety officer. Or you can notify Dr. Michelle Manley in the Division of Student Affairs at (954) 262-7482 or mmichell@nova.edu. Anyone who does not follow safety protocols will be subject to disciplinary actions outlined in the student handbook. We take these safety measures very seriously and we need all students (and employees) to do the same.

For more, go to nova.edu/cv19

SELF MONITOR.



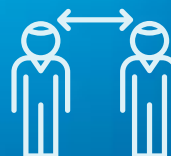
Take your temperature, check for COVID-19 symptoms daily.

USE A FACE COVERING.



Cover your mouth and nose and avoid touching your face.

MAINTAIN PHYSICAL DISTANCE.



Handshakes and hugs aren't a good idea, but a wave and a "Fins Up!" are!

WASH YOUR HANDS, PLEASE.



Spend at least 20 seconds and use plenty of soap and water.