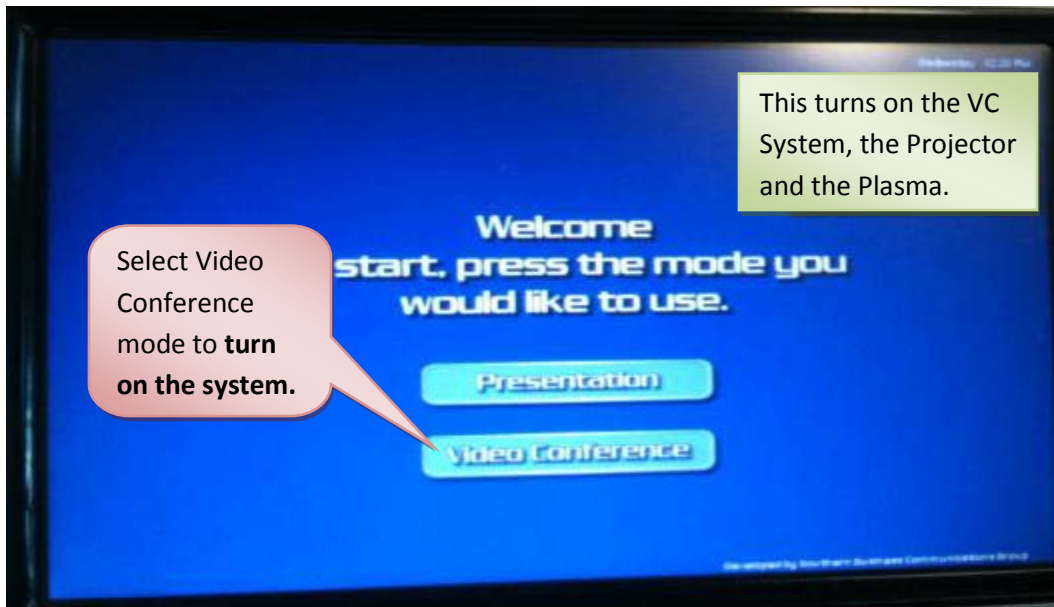


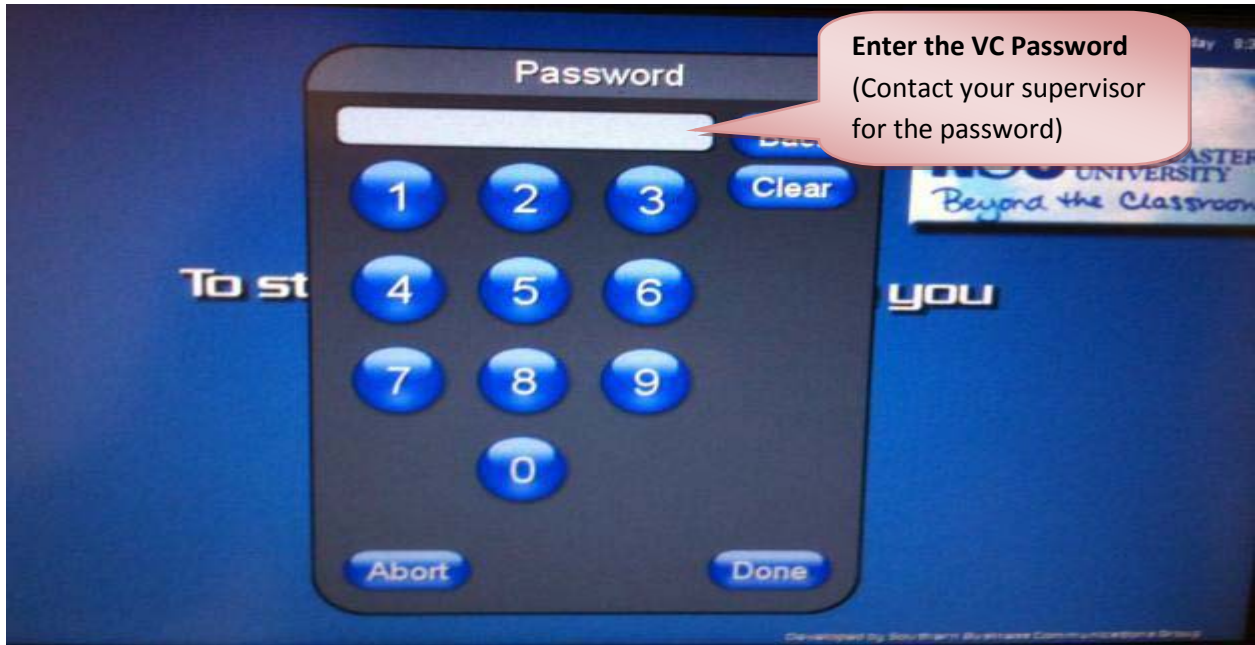


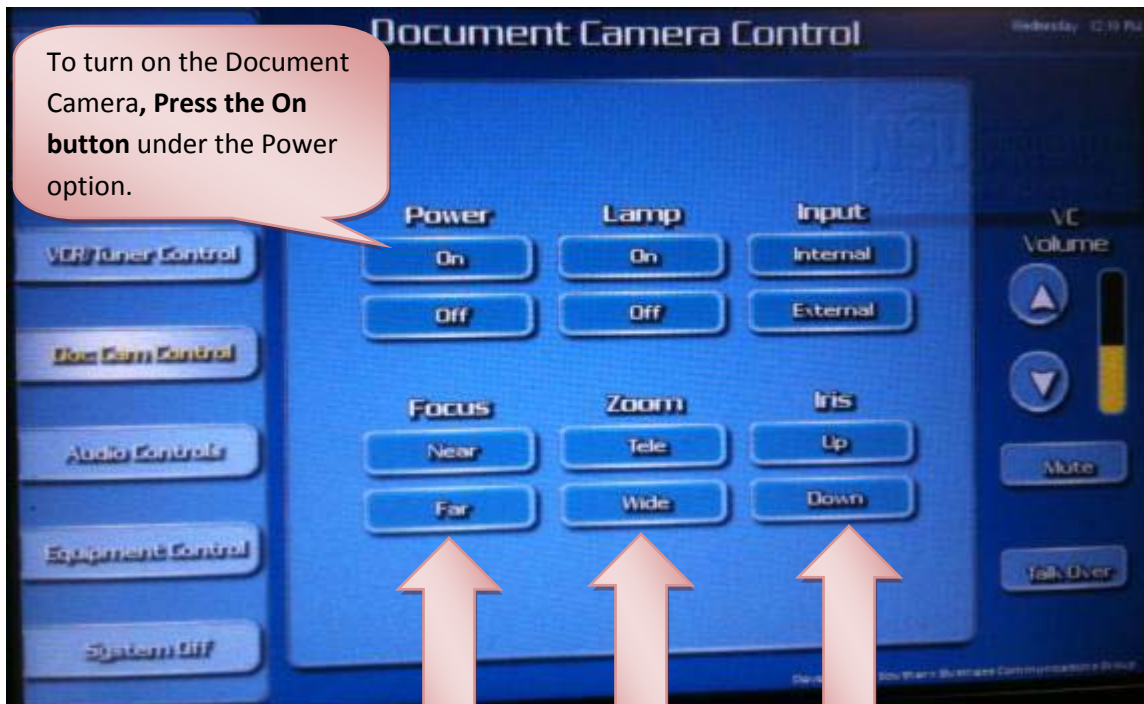
DeSantis Building Electronic Classroom  
**VIDEO CONFERENCING INSTRUCTIONS FOR ROOM 3032**

---

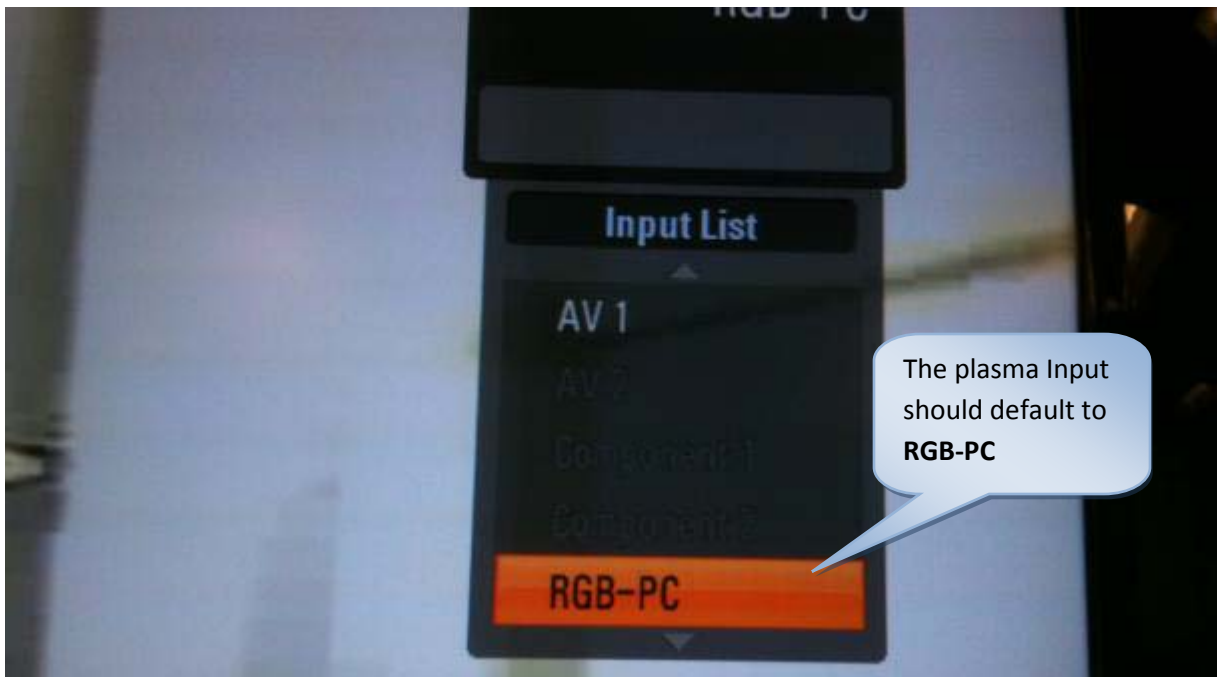
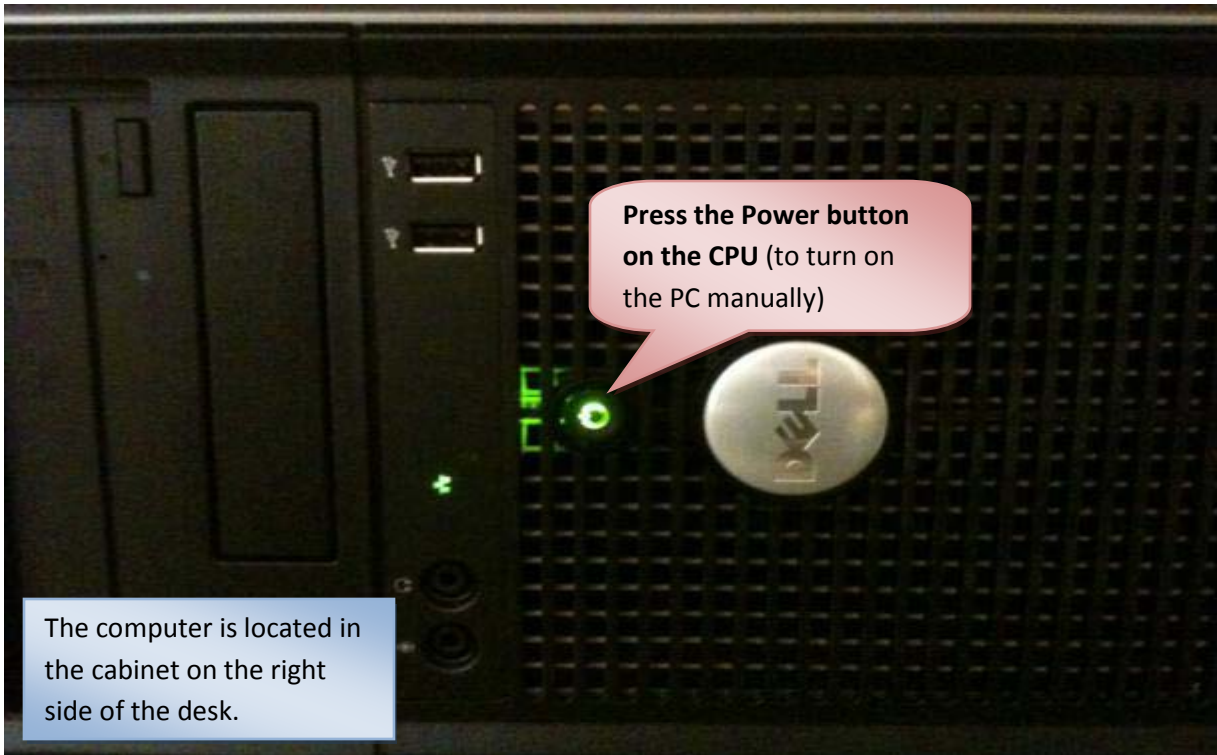
**Turning on the System:**





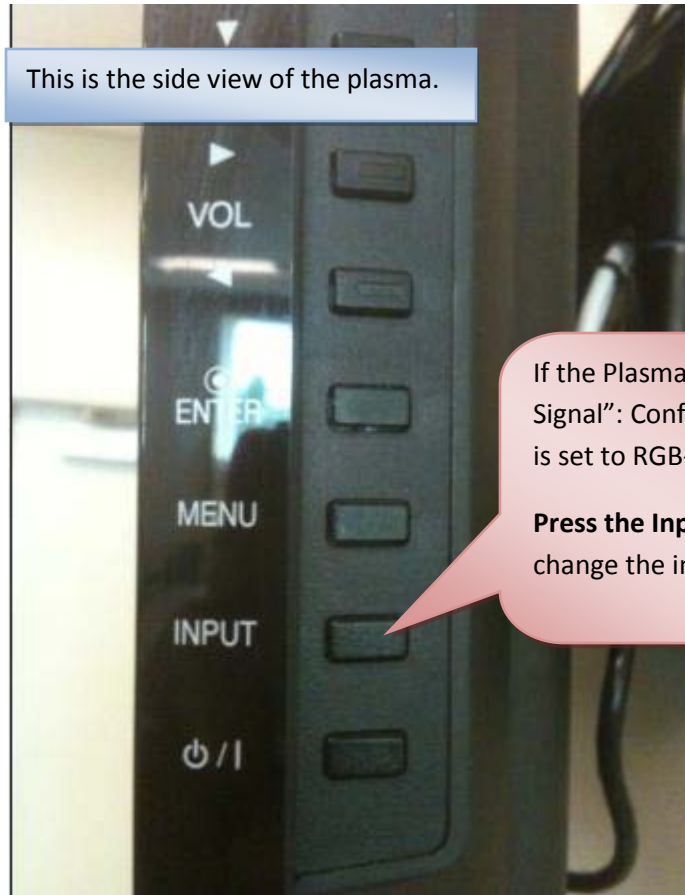


To focus, Zoom or sharpen the image...  
Select from the above options.





This is the side view of the plasma.



If the Plasma says "No Signal": Confirm the input is set to RGB-PC.

**Press the Input button** to change the input settings.

## Overview of the VC System for sharing system components:

**Data Share** allows you to send sources to the distant sites.

The screenshot shows the 'Video Conference Control' interface with several callout boxes pointing to specific buttons:

- Call
- Hang Up
- Press to send PC. (points to Room PC)
- Press to send Laptop (points to Laptop)
- Press to send Doc Cam (points to Doc Camera)
- Press to send DVD (points to DVD)
- Press to send VCR (points to VCR Tuner)

Other visible buttons include: Main Control, Dial Menu, Cam Control, Students Camera, Podium Camera, Near/Far Swap, Data Share, VC Volume, VCR Tuner Control, Doc Cam Control, Audio Controls, Equipment Control, System Off, Home, PP, and Talk Over.

## Sending the camera view

**Note:** Distant sites only see what is on the Projector screen

The screenshot shows the 'Video Conference Control' interface with callout boxes for camera view selection:

- Press to view Student Camera (points to Students Camera)
- Press to view Podium Camera (points to Podium Camera)
- Press to alternate between displaying FAR/NEAR end to the Projector/Plasma (points to Near/Far Swap)

Other visible buttons include: Main Control, Dial Menu, Cam Control, Call, Hang Up, VCR Tuner Control, Doc Cam Control, Audio Controls, Equipment Control, System Off, Home, Back, PP, Room PC, Laptop, Doc Camera, DVD, VCR Tuner, VC Volume, Mute, and Talk Over.

1

To move camera **left** and **right** or **up** and **down**, select the camera you wish to control (Student or Podium).

2

Select Camera Control



3

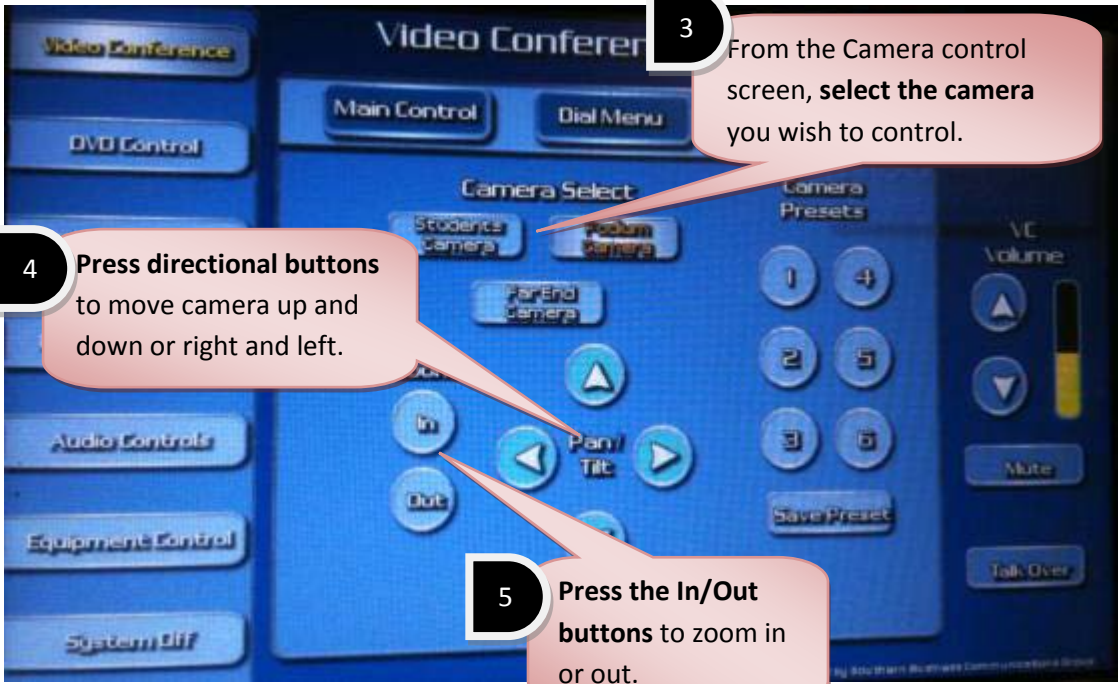
From the Camera control screen, **select the camera** you wish to control.

4

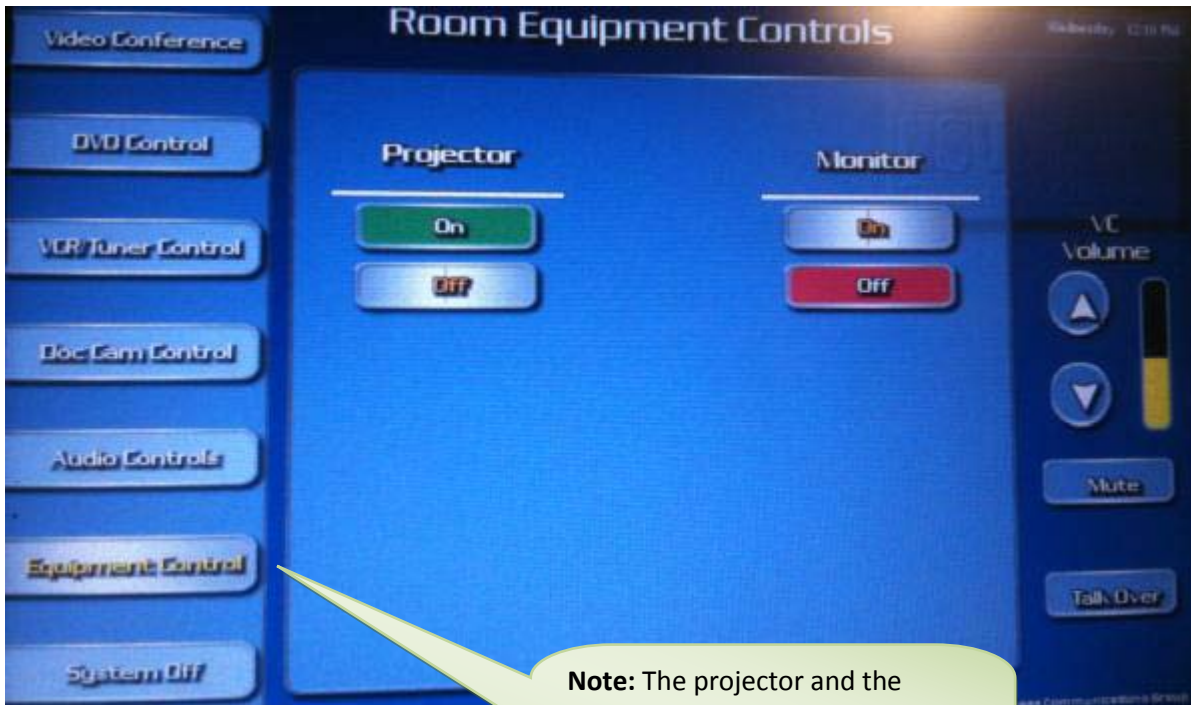
Press directional buttons to move camera up and down or right and left.

5

Press the In/Out buttons to zoom in or out.







**Note:** The projector and the Plasma can be **turned on or off** from the Room Equipment Controls menu.

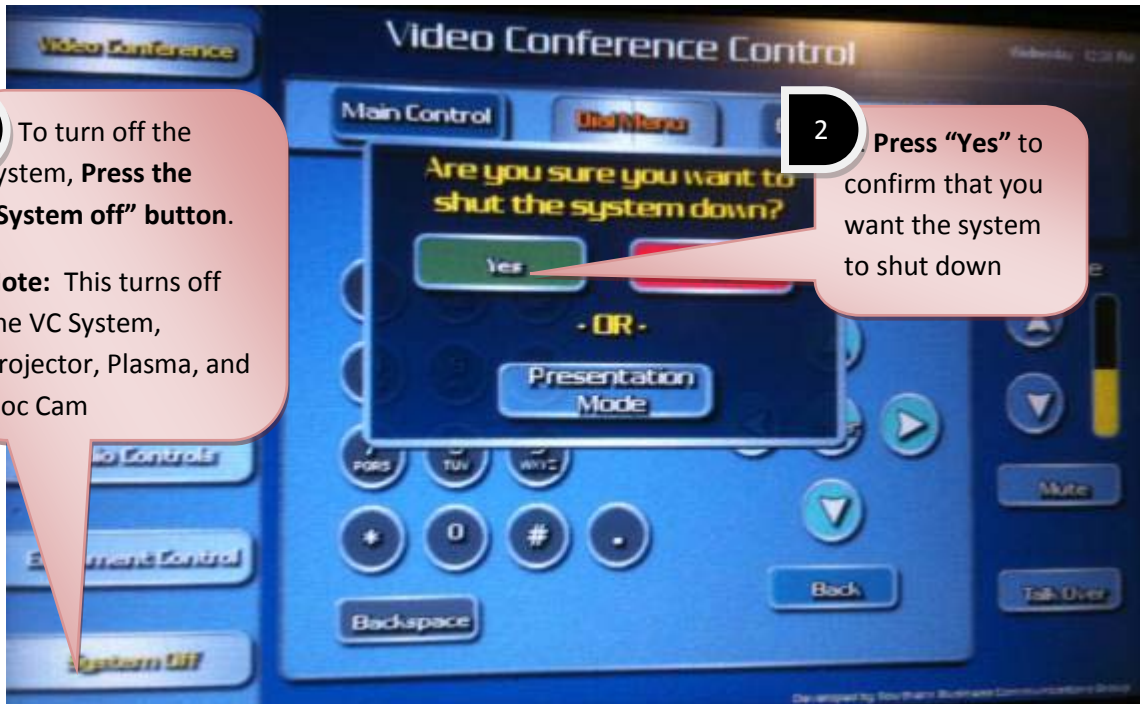


## Shutting Down the System

1 To turn off the system, Press the "System off" button.

**Note:** This turns off the VC System, Projector, Plasma, and Doc Cam

2 Press "Yes" to confirm that you want the system to shut down



When the system is properly shut down this screen will be displayed on the AMX box.

