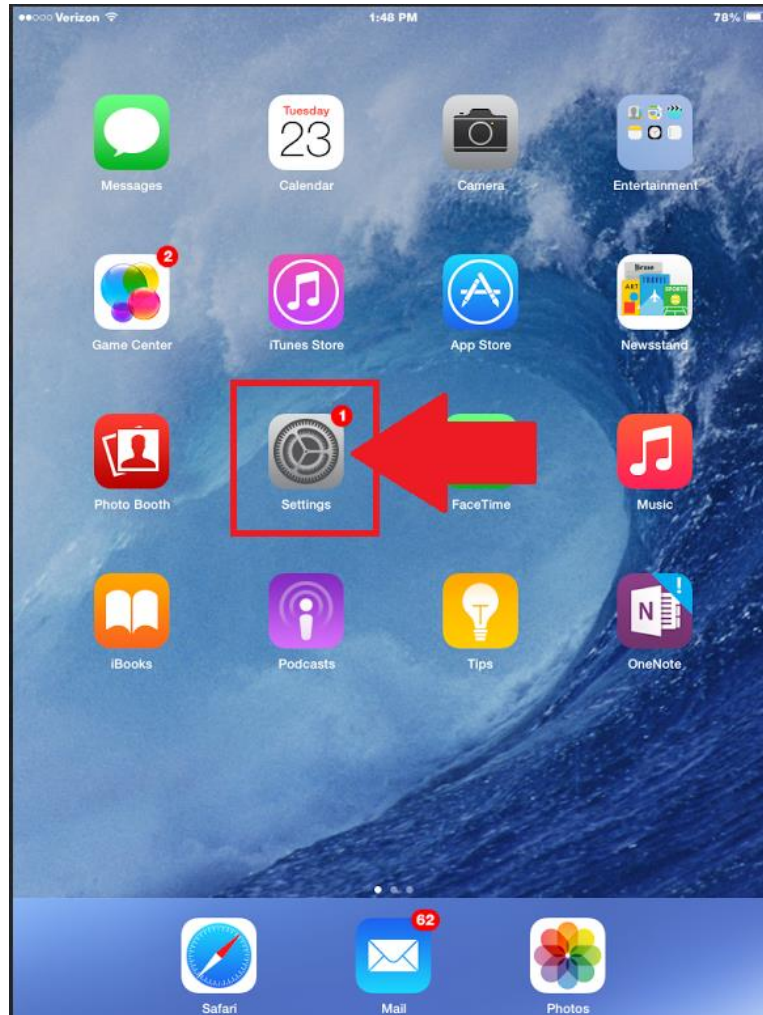
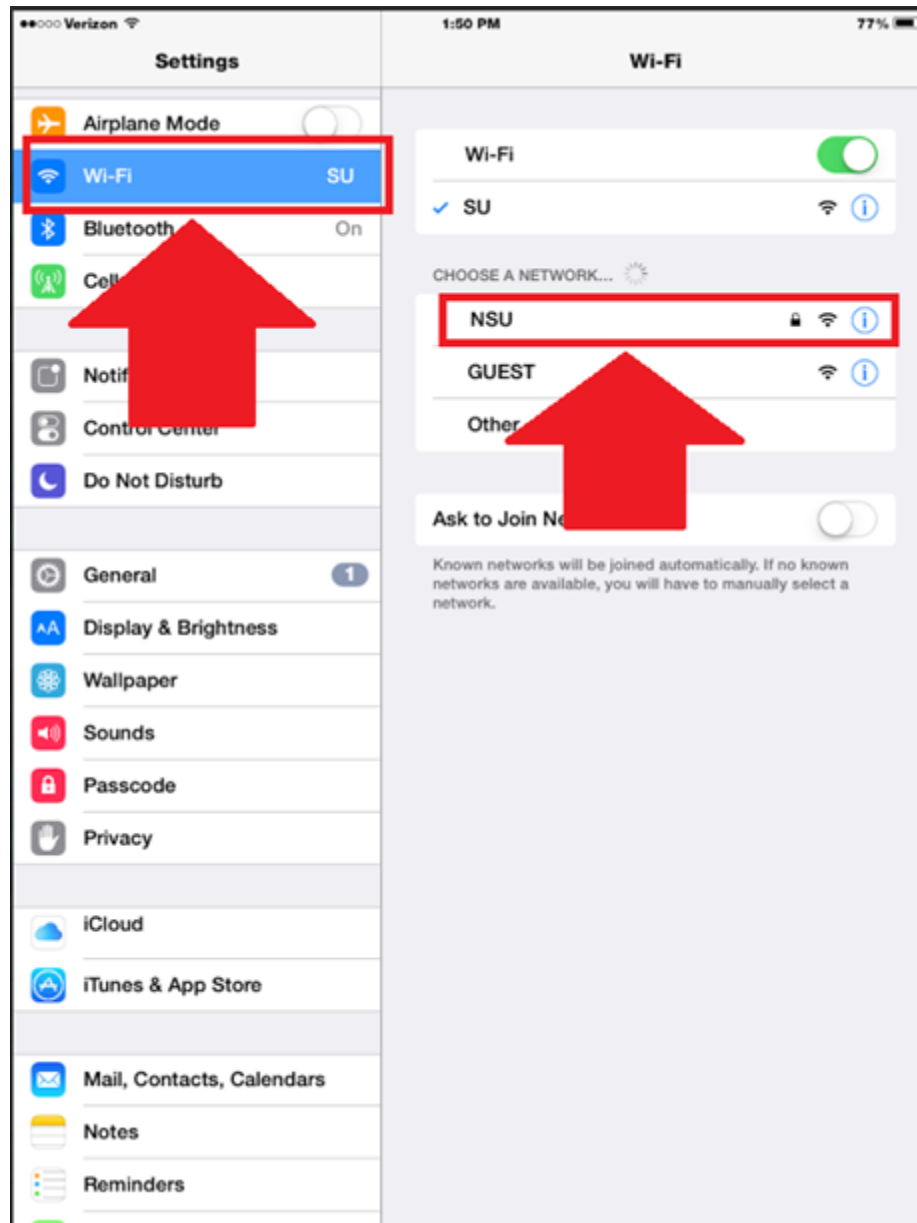


Apple iPhone, iPad or iPod Touch

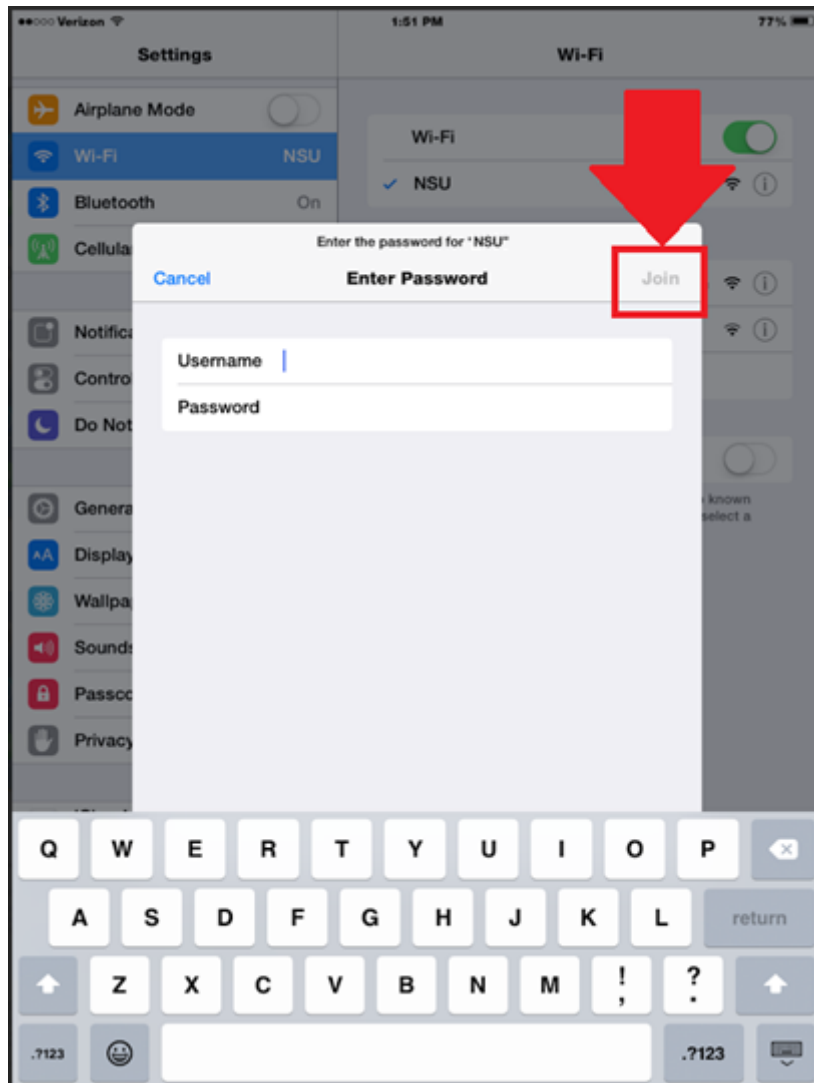
1. On the iOS device, from the home screen, tap “Settings.”



2. Tap “Wi-Fi”; it will scan for available networks.
3. Select “NSU” from your Wi-Fi list.



4. When prompted for a username/password, enter your NSU username and password.
5. Tap “**Join**” in upper-right-hand corner.



6. The first time you connect, you will be asked to accept the server's certificate, clearpass.nova.edu. Do so by selecting "**Trust**" at upper-right-hand corner.

Cancel

Certificate

Trust



clearpass.nova.edu

Issued by Symantec Class 3 Secure Server CA - G4

Not Trusted

Expires 7/8/16, 7:59:59 PM

More Details

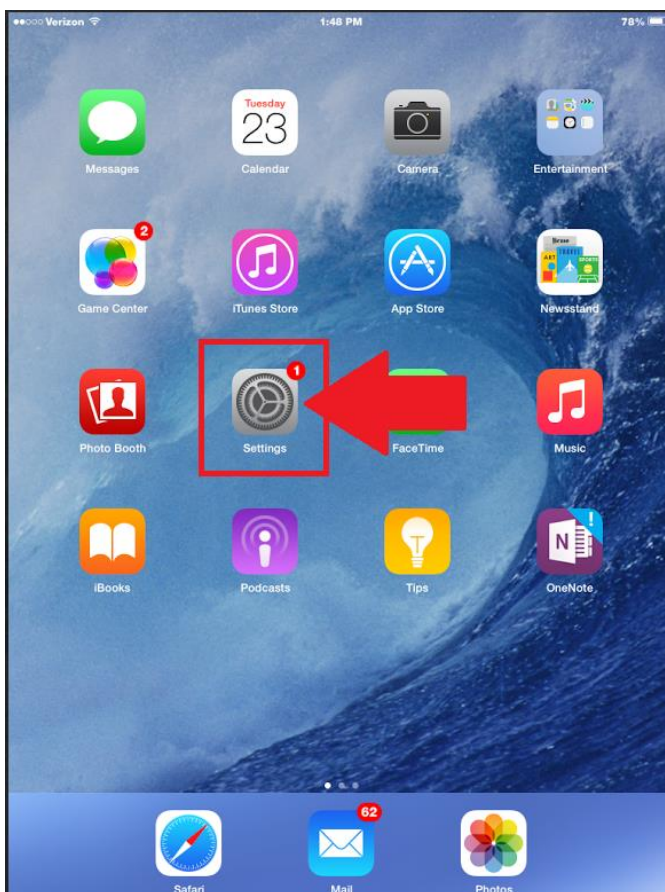


Note: You will only need to accept the certificate the first time you authenticate to “INSU”. After that, authentication will be automatic.

Forget Wireless Network in iOS

Forgetting wireless networks allow your computer to reset some settings, such as usernames, passwords, or configurations that allow you to connect automatically. Follow the instructions below to learn how to forget a wireless network in iOS devices.

1. Go to **Settings > Wi-Fi**



2. Tap the blue arrow “(>)” or “(i)” next to the network name.



Verizon 1:53 PM 76%


Settings



- Airplane Mode
- Wi-Fi** NSU
- Bluetooth On
- Cellular Data
- Notifications
- Control Center
- Do Not Disturb
- General 1
- Display & Brightness
- Wallpaper
- Sounds
- Passcode
- Privacy
- iCloud
- iTunes & App Store
- Mail, Contacts, Calendars
- Notes
- Reminders

Wi-Fi

Wi-Fi

NSU  

CHOOSE A NETWORK... 

- GUEST  
- Other...

Ask to Join Networks

Known networks will be joined automatically. If no known networks are available, you will have to manually select a network.

3. Choose **Forget this Network**.

