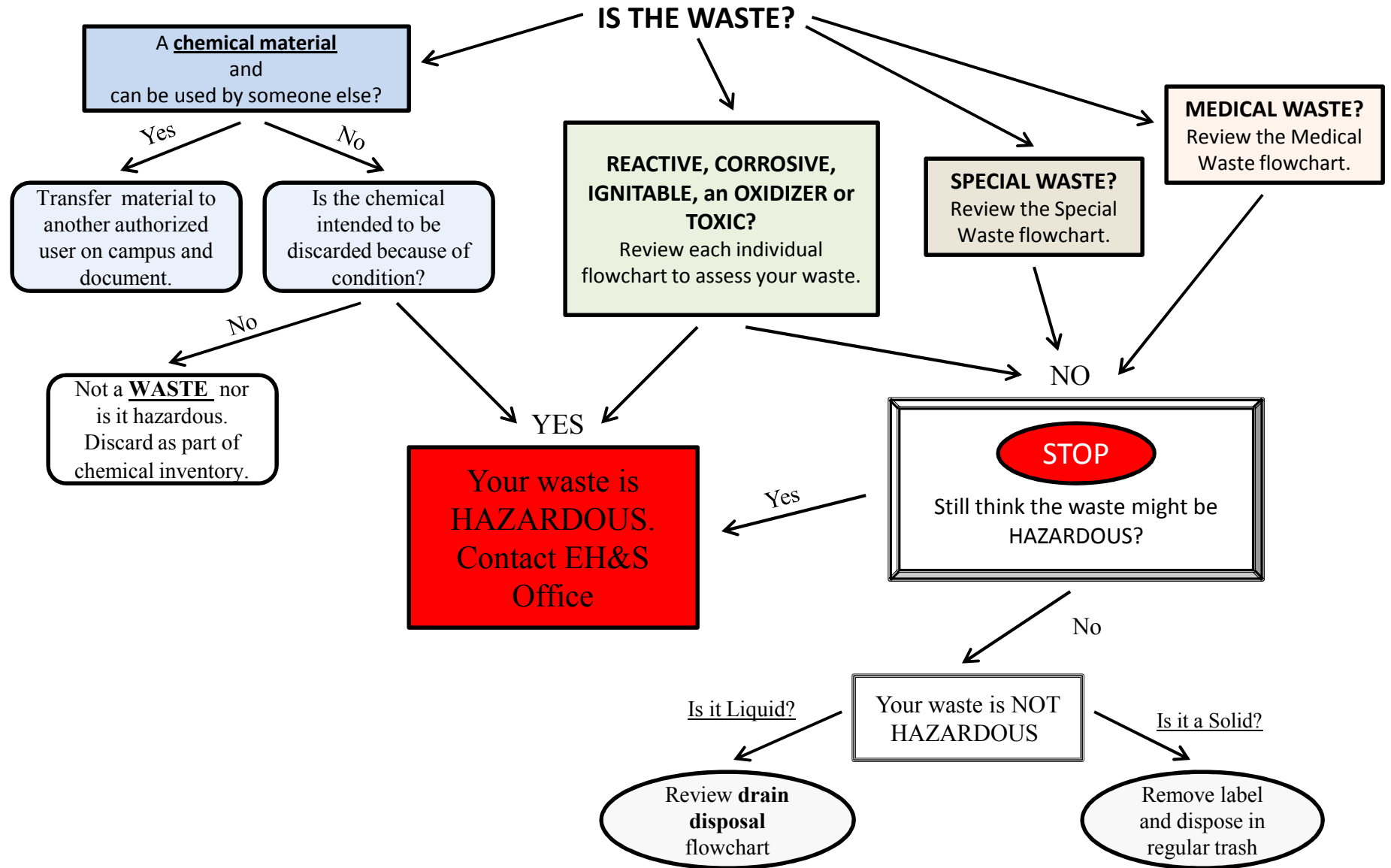


# Hazardous Waste Classification

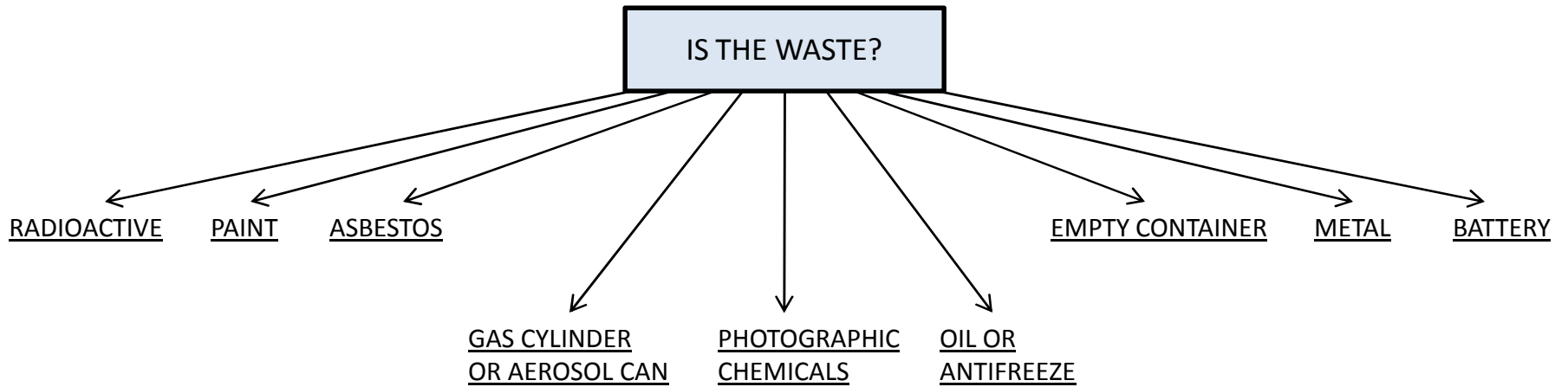
## WASTE DEFINITIONS AND DETERMINATION

### Main Flowchart



Hazardous Waste Classification

SPECIAL WASTE



IF YOUR WASTE FELL INTO ANYONE OF THE ABOVE CATEGORIES REFER TO THE APPROPRIATE FLOW CHART (i.e. paint flowchart)

NO ↓

YOUR WASTE IS NOT ONE OF THE ABOVE

THEN ↓

YOUR WASTE MATERIAL IS NOT SPECIAL WASTE  
CONTINUE ON THE MAIN FLOWCHART

Hazardous Waste Classification

RADIOACTIVE WASTE

DOES YOUR WASTE CONTAIN ANY OF THE FOLLOWING?

THIS SIGN DISPLAYED ON  
THE WASTE  
OR WASTE CONTAINER?



OR

RADIOACTIVE MATERIAL?  
*(ANY ISOTOPE EMITTING A FORM  
OF RADIATION)*

URANIUM OR THORIUM  
COMPOUNDS?

SELF-ILLUMINATED EXIT-SIGN?  
SMOKE DETECTOR?  
ELECTRON CAPTURE DETECTOR?  
OR STATIC ELIMINATOR?

YES

**CONTACT:**  
**RADIATION SAFETY OFFICE**  
YOUR WASTE MAY BE RADIOACTIVE WASTE

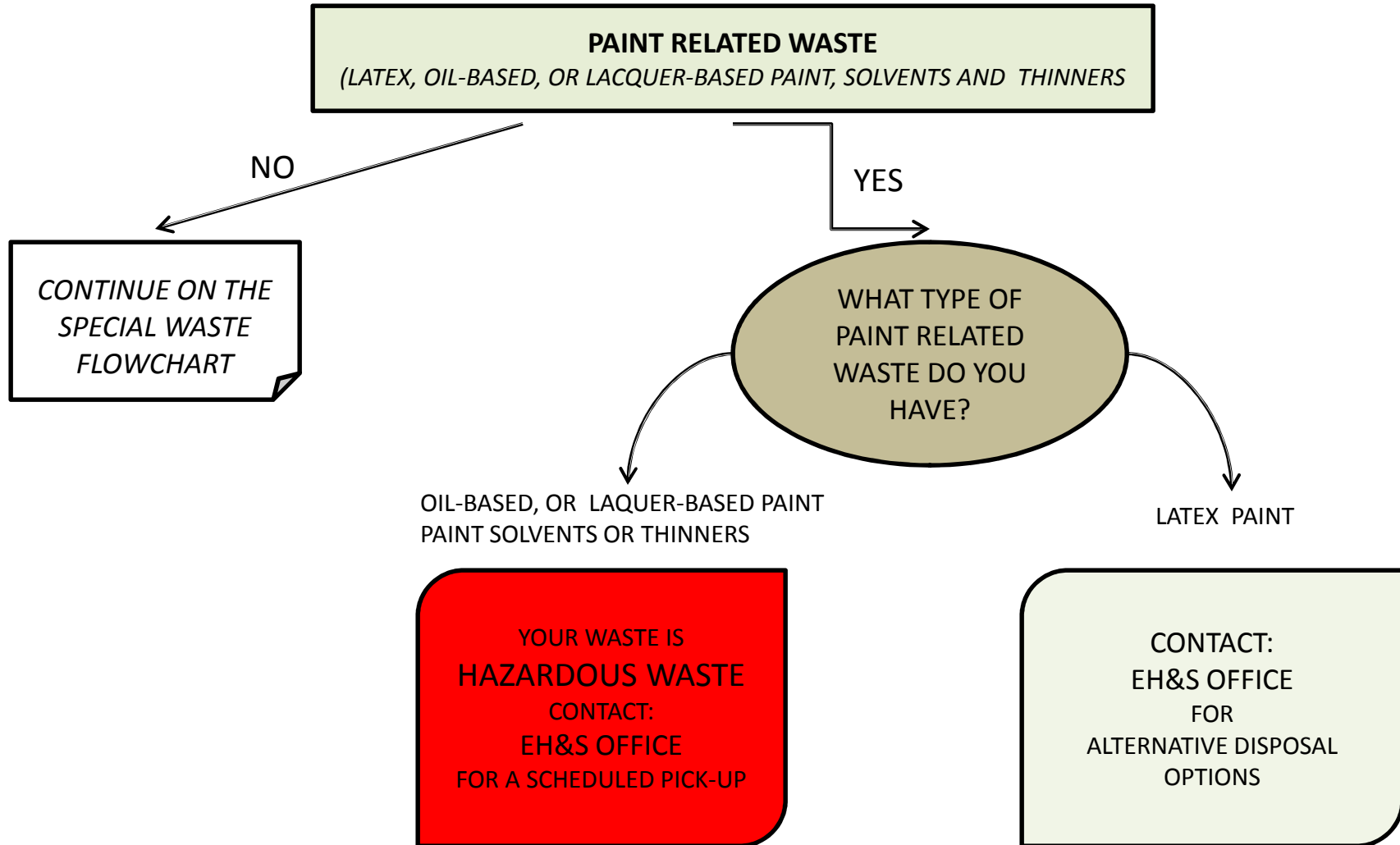
NO

YOUR WASTE IS NOT RADIOACTIVE WASTE  
*CONTINUE ON THE SPECIAL WASTE FLOWCHART*

Hazardous Waste Classification

PAINT RELATED WASTE

**IS THE WASTE?**



Hazardous Waste Classification

ASBESTOS WASTE

**IS THE WASTE?**

ASBESTOS  
With  
Levels >1%

NO

CONTINUE  
ON THE  
SPECIAL WASTE  
FLOWCHART

ASBESTOS MATERIAL

EXAMPLES:

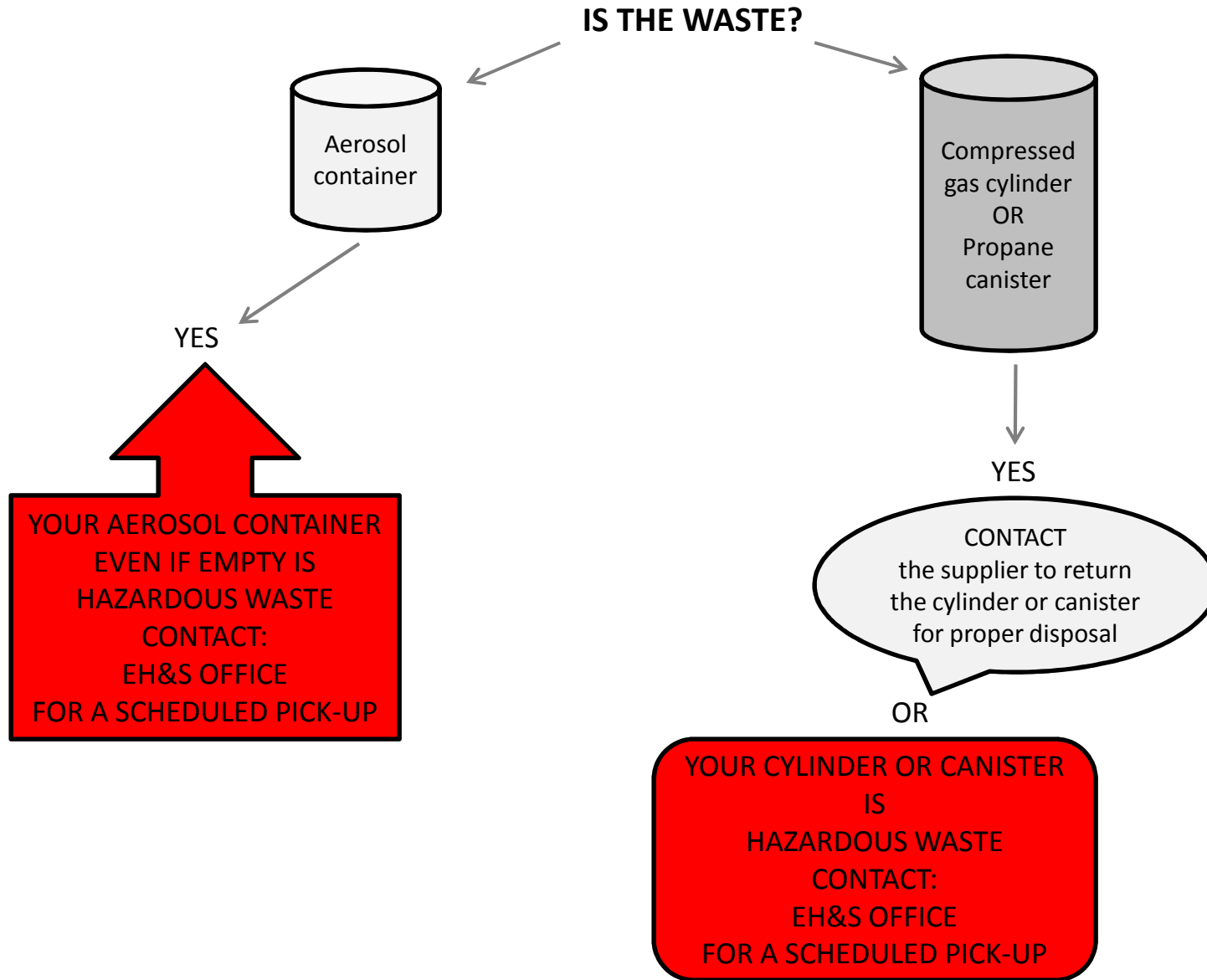
Plaster	Ceiling materials
Electrical wire insulation	Fire door material
Roofing material	Boiler insulation
Floor tile and mastic	
Sheet rock and joint compound	

YES

**YOUR WASTE IS  
REGULATED WASTE  
CONTACT:  
EH&S OFFICE  
FOR A SCHEDULED PICK-UP**

Hazardous Waste Classification

COMPRESSED GAS CYLINDERS & AEROSOL CONTAINERS



Hazardous Waste Classification

PHOTOGRAPHIC CHEMICAL WASTE

**IS THE WASTE?**

**A PHOTOGRAPHIC  
CHEMICAL PRODUCT**

Chemical  
Products  
have they  
been used?

NO

Unused  
photographic  
chemical products  
may be  
**HAZARDOUS WASTE**  
Refer to  
Corrosive & Toxicity  
flowcharts  
or  
**CONTACT**  
the EH&S OFFICE

Fixer,  
Bleach-fixer (blix),  
or  
Color Stabilizer?

YES

To recycle the  
waste use the  
silver recovery  
units .  
  
Any questions  
  
**CONTACT**  
the  
EH&S OFFICE

Selenium  
or  
Sepia Toner?

YES

**THE WASTE IS  
HAZARDOUS  
WASTE**  
  
**CONTACT:  
EH&S OFFICE  
FOR A  
SCHEDULED  
PICK-UP**

Developer  
or  
Hypo clearing  
Agent?

YES

**THE WASTE  
MAY BE  
DISPOSED  
OF  
DOWN  
THE  
SEWER DRAIN**

Indicator  
Stop Bath?

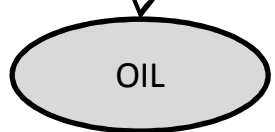
YES

In a well ventilated  
area using PPE;  
the solution should  
be neutralized with  
sodium bicarbonate  
which should be add  
slowly to the solution  
to prevent foaming.  
Once neutralized –  
dispose down sewer  
drain.

# Hazardous Waste Classification

## OIL & ANTIFREEZE WASTE

IS THE WASTE?



YES

YES

Type of Oil
▪ Motor oil
▪ Power steering fluid
▪ Gear oil
▪ Hydraulic oil
▪ Kerosene
▪ Transmission fluid
▪ Diesel fluid
▪ Fuel oil

Type of Antifreeze
▪ Ethylene Glycol
▪ Coolant from Chillers/ HVAC systems
▪ Propylene Glycol

YES

YES

Recycle the waste in the designated drum.  
For assistance CONTACT EH&S OFFICE

NO

THEN

IS THE WASTE?

▪ Hazardous chemical contaminated with oil	▪ Degreasing solvents
▪ Gasoline	▪ Chlorinated solvents
▪ Oily water	▪ Freon or Freon contaminated with oil
▪ Radiator flush	▪ Transformer oil
▪ Brake fluid	

YES

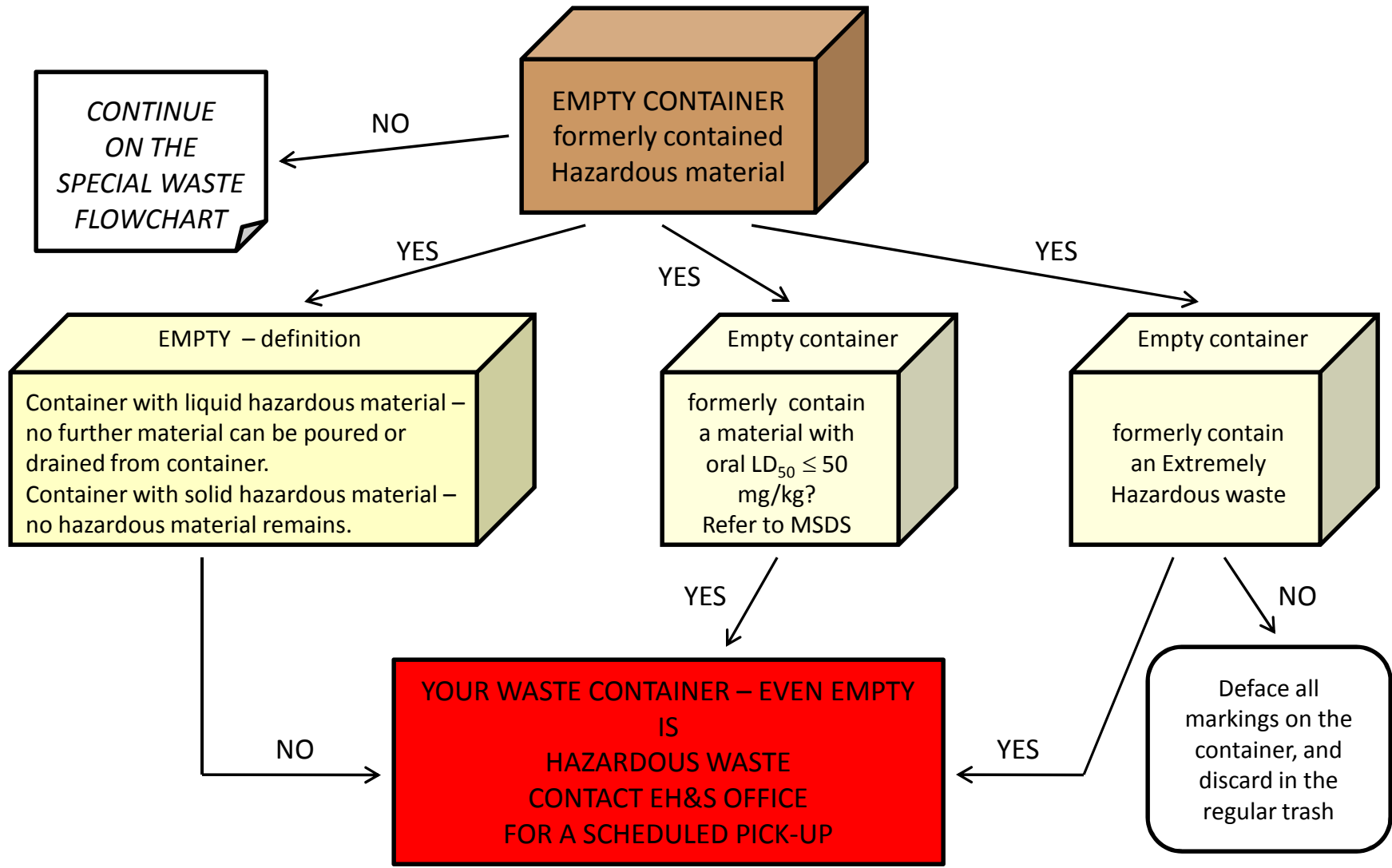
**YOUR WASTE IS HAZARDOUS WASTE  
CONTACT:  
EH&S OFFICE  
FOR A SCHEDULED PICK-UP**



Hazardous Waste Classification

EMPTY CONTAINERS

**IS THE WASTE?**



Hazardous Waste Classification

SCRAP METAL WASTE

**IS THE WASTE?**

A SOLID METAL

NO

YES

The waste can not be recycled as scrap metal.

*CONTINUE ON THE SPECIAL WASTE FLOWCHART*

NO

TYPE OF METAL:

- Aluminum
- Copper
- Iron
- Lead
- Steel
- Zinc

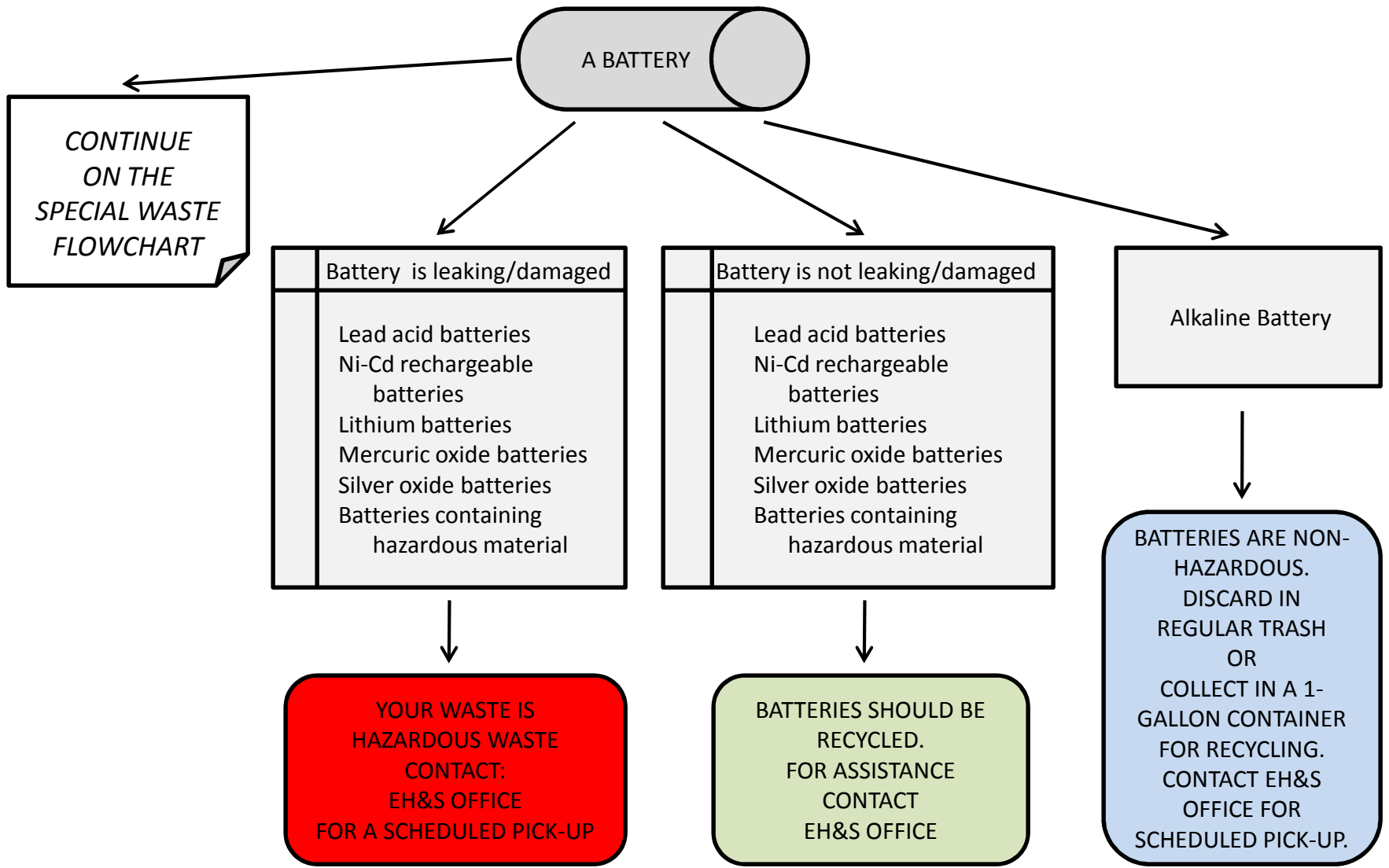
YES

Once you have more than 5 pounds of accumulated metal, CONTACT EH&S OFFICE

Hazardous Waste Classification

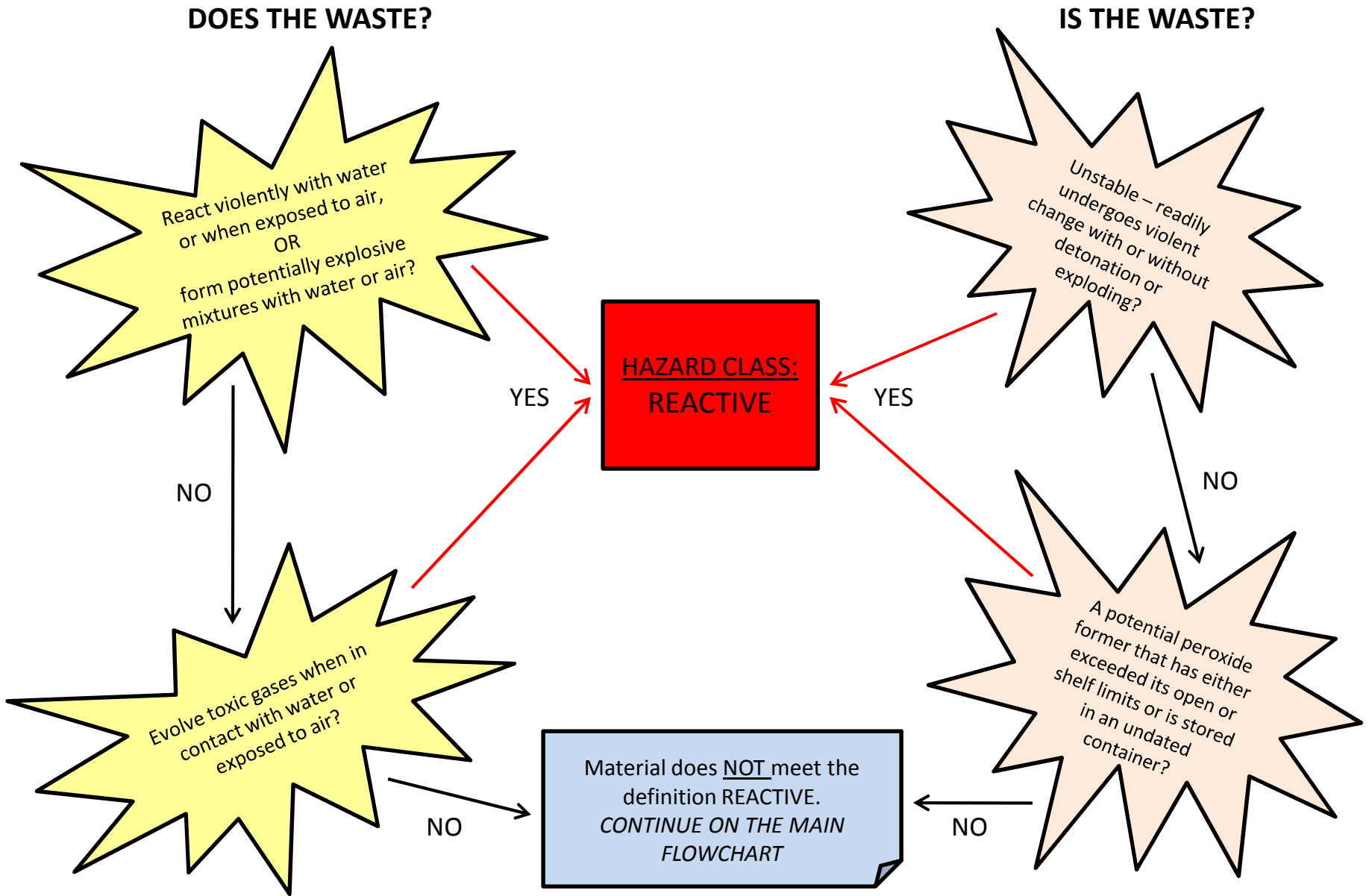
USED BATTERIES

**IS THE WASTE?**



Hazardous Waste Classification

REACTIVE WASTE



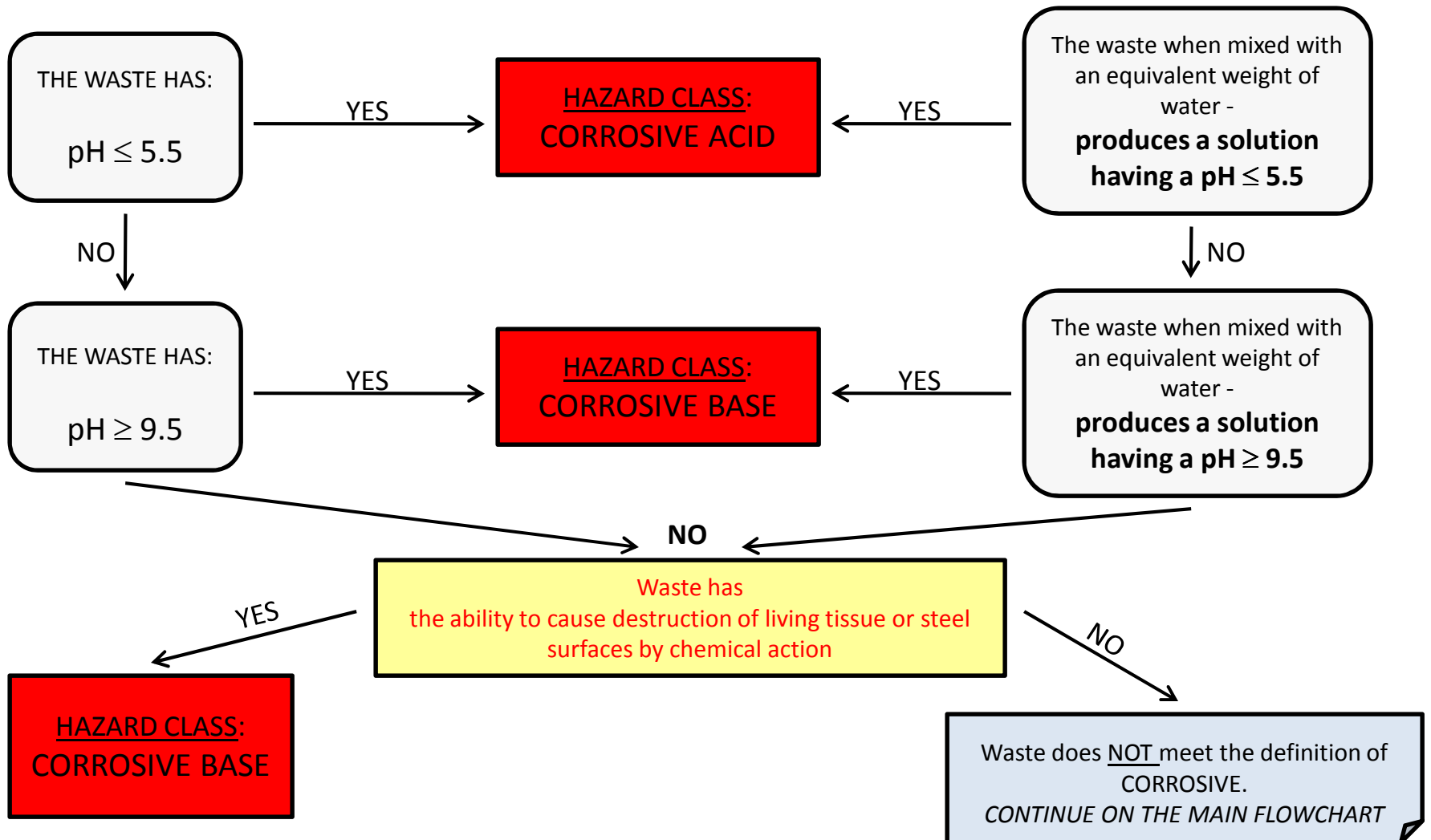
Hazardous Waste Classification

CORROSIVE WASTE

**PHYSICAL STATE OF THE WASTE?**

AQUEOUS LIQUID WASTE

NON-AQUEOUS OR NON-LIQUID WASTE



Hazardous Waste Classification

IGNITABLE WASTE

**PHYSICAL STATE OF THE WASTE?**

LIQUID WASTE

IS THE FLASH POINT OF THE LIQUID WASTE  $\leq 140$  °F /  $\leq 60$  °C ?

NO

IS THE LIQUID WASTE: AN AQUEOUS SOLUTION CONTAINING  $\geq 24\%$  ALCOHOL?

NO

YES

YES

**HAZARD CLASS:  
IGNITABLE**

SOLID WASTE

IS THE SOLID WASTE – CAPABLE OF CAUSING FIRE THROUGH FRICTION, MOISTURE ABSORPTION, OR SPONTANEOUS CHEMICAL CHANGE?

YES

NO

Waste does NOT meet the definition of IGNITABLE.  
CONTINUE ON THE MAIN FLOWCHART

Hazardous Waste Classification

OXIDIZING WASTE

**DOES THE WASTE?**

Release oxygen when reacting with another chemical?

YES

NO

React with organic materials resulting in fire or the generation of heat? (i.e., oils, greases, wood, cloth, etc.)

YES

NO

Waste does NOT meet the definition of an OXIDIZER  
*CONTINUE ON THE MAIN FLOWCHART*

**IS THE WASTE?**

A member of one of the common oxidizer?  
OR  
An aqueous solution of any of the common categories which exhibit any of the oxidizing properties stated to the left?

YES

NO

HAZARD CLASS:  
**OXIDIZER**

Hazardous Waste Classification

TOXICITY WASTE

**TOXICITY?**

THERE ARE MANY DIFFERENT CRITERIA AND LISTS MAKING IT A COMPLICATED PROCESS WHEN DETERMINING WASTE AS HAZARDOUS WASTE DUE TO THE TOXICITY.

REVIEW THE GUIDELINES IN THE HAZARDOUS WASTE PLAN, AND THE MATERIAL SAFETY DATA SHEETS TO DETERMINE THE TOXICITY.

FOR QUESTIONS REGARDING THE TOXICITY OF A WASTE, CHECK WITH THE EH&S OFFICE BEFORE DISPOSING OF THE WASTE.

NO

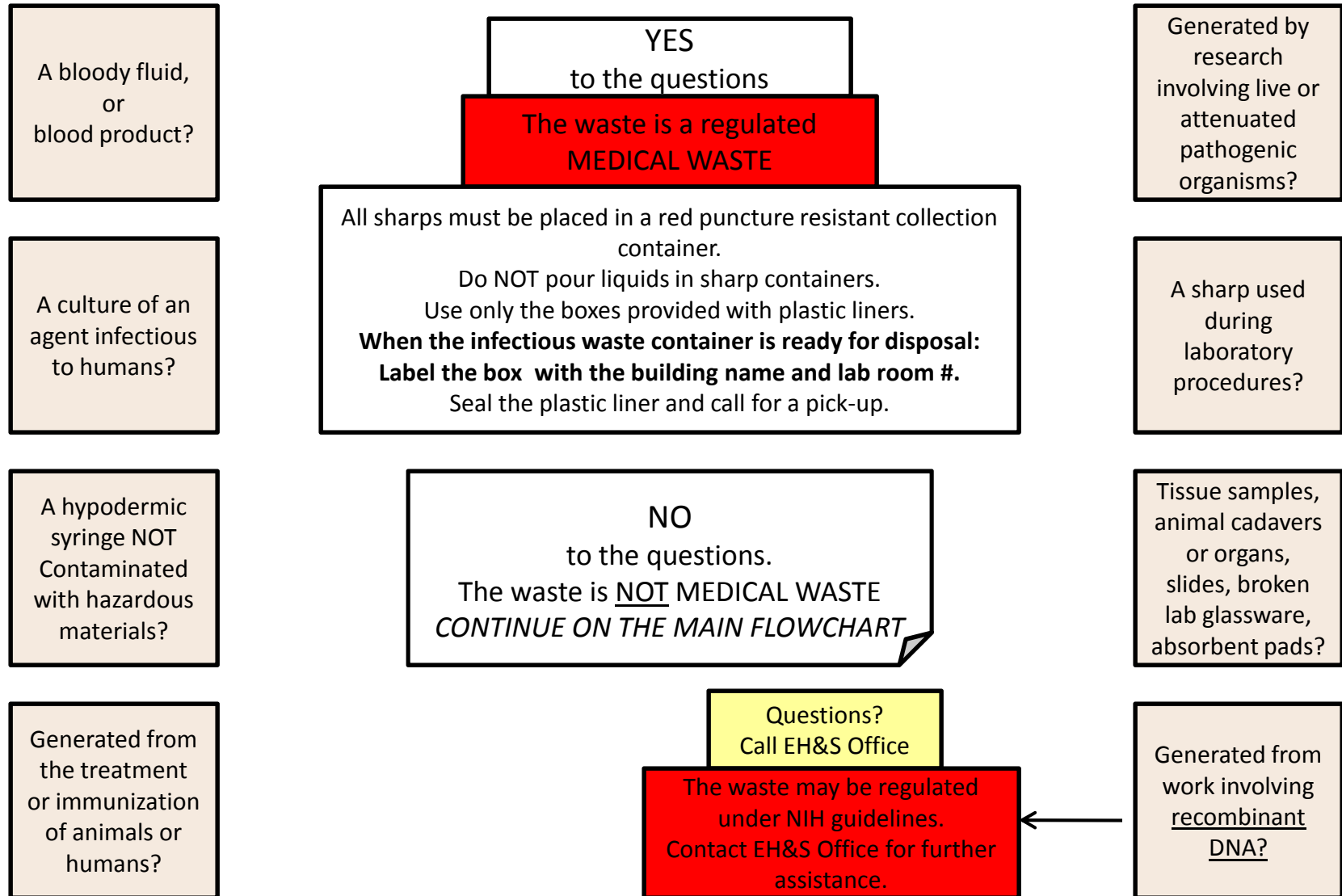
Waste does NOT meet the definition  
of TOXIC  
*CONTINUE ON THE MAIN  
FLOWCHART*



## Hazardous Waste Classification

### MEDICAL WASTE

#### IS THE WASTE?



Hazardous Waste Classification

DRAIN DISPOSAL

