



FBI

Regional Community Engaged Learning to Support First Responders

Partnership between the City of Johnson City and East Tennessee
State University



ATF



**EAST TENNESSEE STATE
UNIVERSITY**

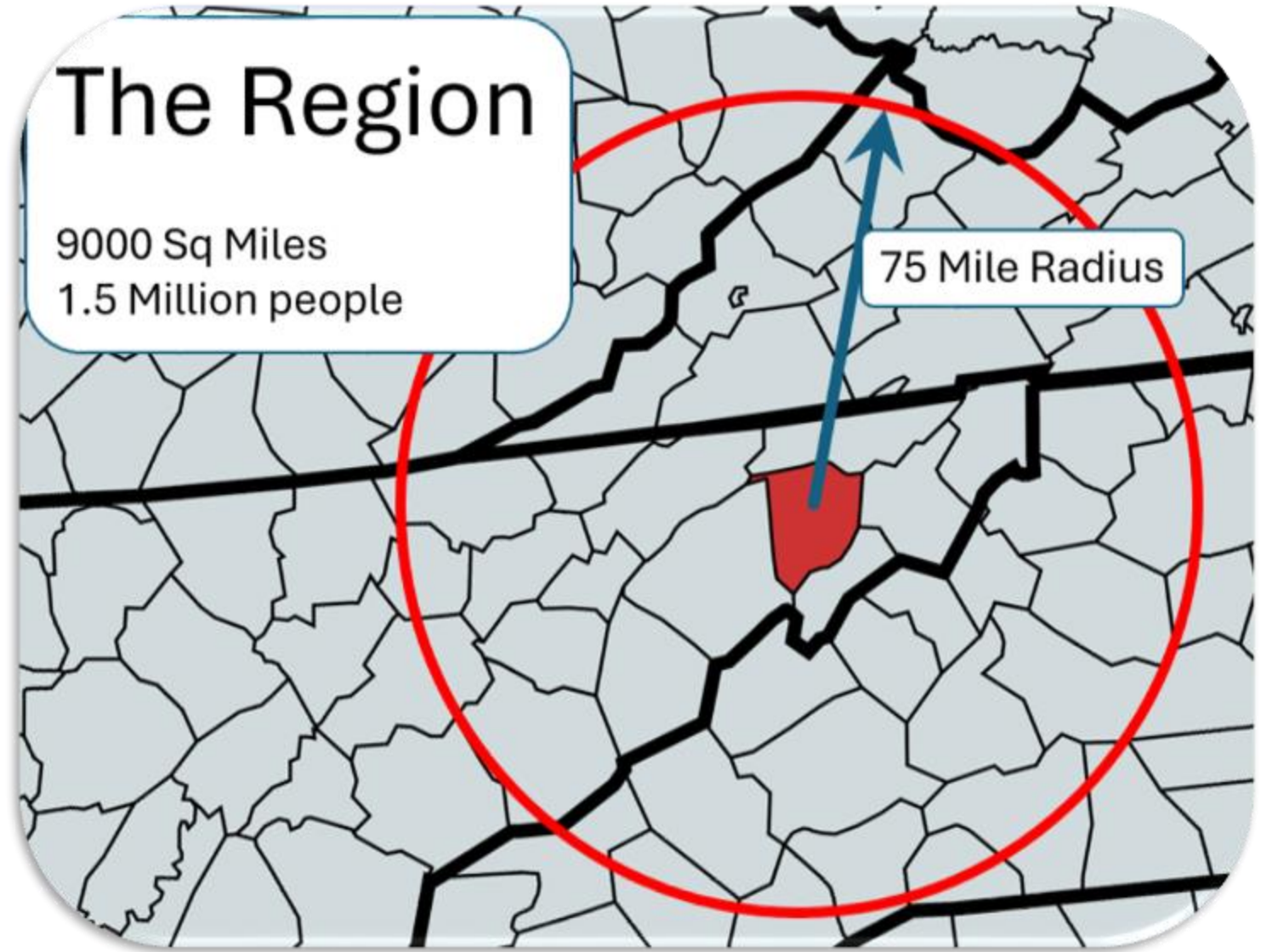
**Cybersecurity Innovation
and Outreach Center**

The Problem



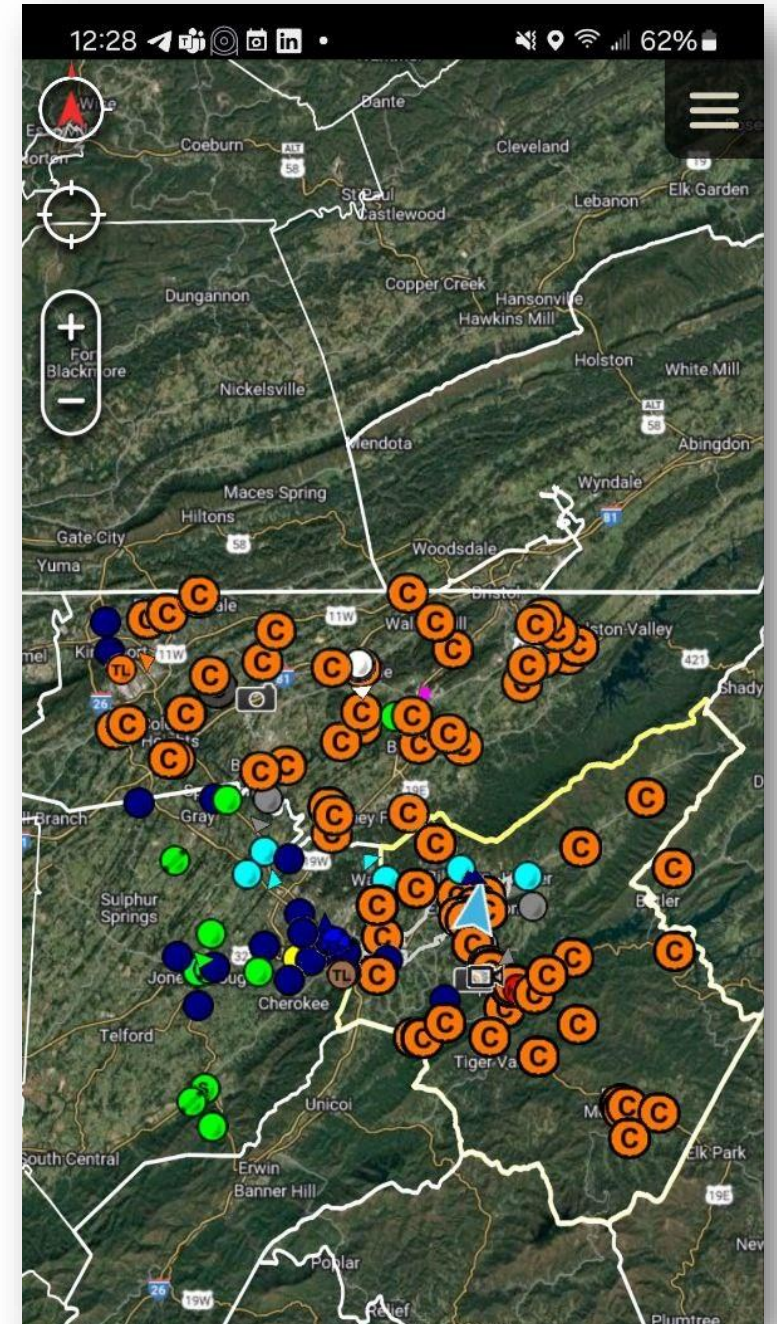
The Problem

- Bringing First Responder Tooling and Technology to Rural America
- Unique challenges
 - Multiple municipalities
 - Large geographic area
 - Large population base
- All the problems of an urban setting
- Operational Research within the community



Natural Disasters

- Situational Awareness Tooling
- 'find my first responder' app
- Tool becomes more useful as agencies join
- Drone Detection



Collaborative Efforts for the Region

- National Integrated Ballistic Information Network (NIBIN)
- ATF supported lab
- Shell casing fingerprinting
- 400+ items processed in the past year





Regional Real Time Crime Center

- Data Analysis to provide real time support to officers in the field
- Expensive to run 24x7 for rural agencies
- Internship and Curriculum Opportunities
- Bring Technology to Rural Agencies

Community Partnership

- Curriculum Development
- Computing and Cybersecurity are in demand
- Pushing these skills into the First Responder domain
- Interdisciplinary in nature:
 - Data Analysis Skills, Criminal Justice, Public Health
- Student experiences in the RTCC, NIBIN Lab, Situational Awareness Deployment, Device Management
- Operational Research



Computer Specific Research Areas

- Data – lots and lots of data
- Interesting questions can be asked
 - Long term rental AND window tinting
 - License plate in Orlando on Monday and Miami on Tuesday
- Computer Forensics
- Intelligence Analyst
- Real Time Crime Center Management
- Autonomous system research

Future Projects

- System Administration
- Onboarding of more agencies
- MOUs
- Support from state and federal agencies
- More interdisciplinary programs to support regions first responders
- Crimes against Children Conference



- Michael Lehrfeld Lehrfeld@etsu.edu
- https://www.johnsoncitytn.org/services/police/safe_city_project/index.php
- Tak.gov
- www.nrtcca.org
- crimegunintelcenters.org