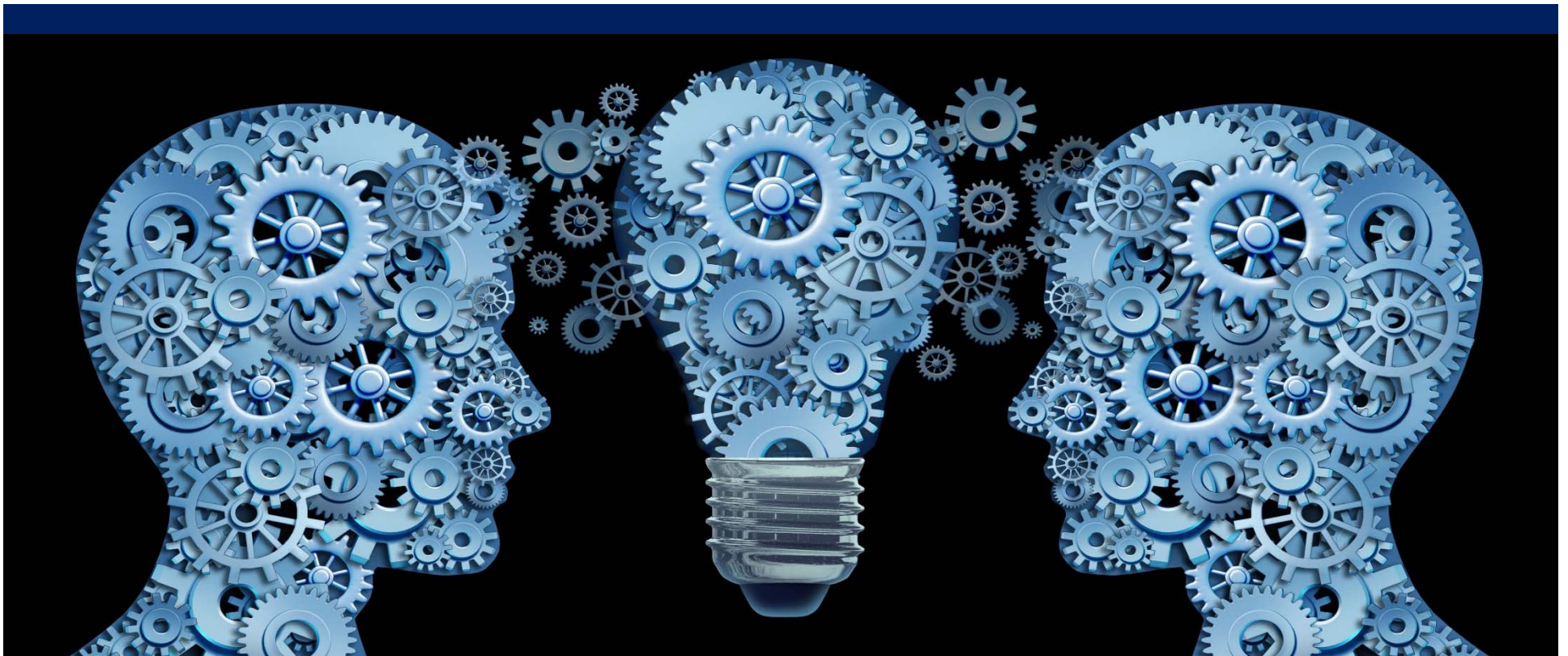


# Regulatory and Institutional Updates

Dr. Stephanie G. Brown  
Vice President, Enrollment and Student Services



# Federal Regulations Introduced to Congress this Session

Select legislation introduced by the 115<sup>th</sup>  
Congress after September 2017



# Federal Regulations

- Reauthorization of the Higher Education Act
  - Prosper Act  
(Promoting Real Opportunity, Success,  
and Prosperity Through Education Reform)
- Student Aid Funding
  - America's College Promise Act



# Federal Regulations

- Consumer Information and Transparency
  - Achieving Independence Through Degrees (AID) Act
- FAFSA Simplification
  - Reducing the complexity in applying for financial aid



# Federal Regulations

- Loans and Repayment
  - Federal-State partnerships for a debt-free education
- Quality and Accountability
  - Protecting students for college success



# Federal Regulations

- White House Education Policy Proposal
  - Merging the Department of Education and the Department of Labor



# State of Florida

- Florida has joined the State Authorization Reciprocity Agreement (SARA).
  - SARA is an agreement that establishes national standards for interstate postsecondary distance education programs.



# NSU Updates

- Data Integrity and Protection
  - Global focus on data protection and privacy



# Enrollment and Student Services (ESS) Updates

A Few ESS Student-Centered Initiatives



# ESS Updates

- Wait Listing Courses

- The Banner Wait List (WL) functionality has been implemented for LAW for Fall 2018.



# ESS Updates

- Degree Works

- Ellucian has released Degree Works, an enhanced system that will replace the Curriculum Advising and Program Planning (CAPP) module.



# ESS Updates

- SharkCard Services

- Expanded use of the SharkCard outside of NSU



# Innovation...

*“Innovation is anything  
but business as usual.”*

*- Anonymous*



# Contact Information

**Dr. Stephanie G. Brown**

*Vice President*

*Enrollment and Student Services*

Ext.: 27456

Email: *browstep@nova.edu*

