



FLORIDA KEYS Field Trip

Restored vessel grounding areas in the Florida Keys National Marine Sanctuary: Site recovery and lessons learned

Date: 5 July 2008

Trip Leaders: Harold Hudson and Bill Goodwin

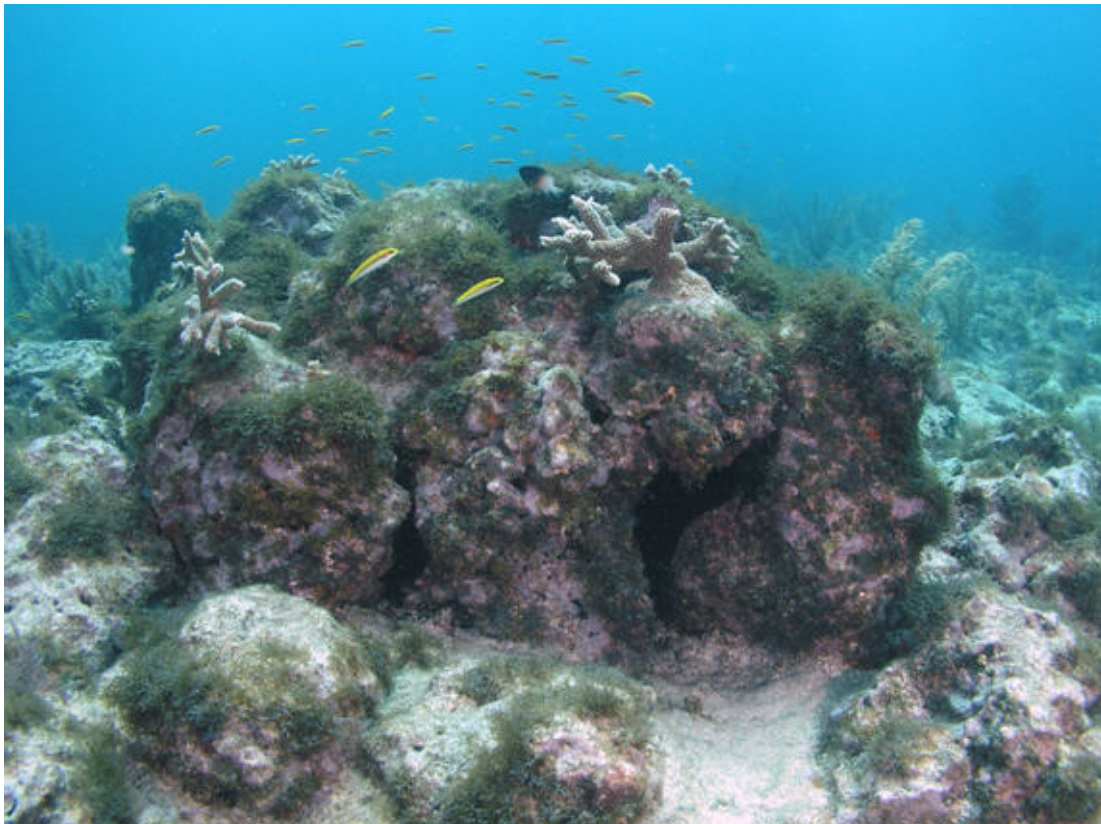


Photo credit: Jeff Anderson, FKNMS

Wellwood restoration project (restoration structure)
Molasses Reef, Key Largo

Field Trip Overview:

Key Largo, the longest island in the Florida Keys National Marine Sanctuary is just 100 miles from Ft. Lauderdale. Some of the most well developed coral reefs in the Sanctuary are 9 km offshore of the coast and rise to within a few meters of the surface. Seaward of the reef tract is the Straits of Florida, a major shipping lane for large international cargo vessels. Over the years, a number these huge ships have strayed off course, plowing into the shallow reefs, causing catastrophic injury to the fragile coral formations.

Our field trip will feature SCUBA dives on three major grounding sites off Key Largo that have been restored under Sanctuary supervision. They are, M/V *Wellwood*, M/V *Alec Owen Maitland* and M/V *Elpis*. Water depth at *Wellwood* site is 7 m, at *Maitland* site is 2 m, and at *Elpis* it is 10 m.

This is an all day trip, leaving at 9 am and returning at approximately 4 pm.

Date: 5 July 2008

Cost: \$150 US for each participant (does not include travel to and from venue, meals, dive equipment, or lodging).

Trip Leaders: Harold Hudson and Bill Goodwin will provide background and context on the history of each grounding and discuss injury assessment techniques, restoration methods, and monitoring of the restored reef area. Following each dive, there will be an opportunity to discuss the observations.

Meeting Point: *Ocean Divers*, Mile Marker 100, Ocean side, Key Largo FL.

Meeting Time: 8:00 am EDT

Transportation: Participants must arrange their own transportation; options include: rental car or bus. Driving time to Key Largo from Ft. Lauderdale is approximately three hours.

Lodging: *Ramada Resort and Marina*, Key Largo \$ 119.00, Continental breakfast. 305-451-3939

Marina Del Mar, Key Largo, \$ 190.00, Continental breakfast. 305-451-4107

Bayside Resort, Key Largo, \$ 109.00, Continental breakfast. 1-800-242-5229
(Note – above prices are for 2007. 2008 rates may be higher)

Meals: Most Key Largo hotels serve a continental breakfast. Both fast-food and sit-down restaurants are nearby for a full breakfast and evening meals. Participants must bring their own food and beverages for lunch aboard the dive boat. Deli sandwiches and beverages are available at The Shell gasoline station in Key Largo. The charter vessel will provide drinking water.

Dive Equipment: Air (2 tanks) and dive weights furnished. BC, fins, mask, etc., can be rented prior to boarding.

Important Information: Water temperature at this time of year is 25 to 27°C. Participants must provide proof of diving certification. Participants that are going to scuba dive must provide proof of emergency insurance (Diver Alert Network or Workers Compensation Insurance).

Bring adequate sun screen lotions and/or protective clothing.

This field trip can accommodate 15 to 30 people.



Photo credit: Jeff Anderson, FKNMS

***Elopsis* Restoration site
Elbow Reef, Key Largo**