



**BISCAYNE  
NATIONAL PARK  
Field Trip**

**Biscayne National Park (Homestead Florida)**

**Coral Nurseries and Shipwreck trail in Biscayne  
National Park**

Dates: 5 July and 12 July 2008

Trip Leaders: Richard Curry, Brenda Lanzendorf, and Thomas Capo



**Biscayne National Park, circa 2004**

## Field Trip Overview:

Biscayne National Park is a 70,212 hectare marine park. 95 % of the resources in the park are underwater where depths range from less than a meter to 18 meters. The park is bisected by a string of coral islands that are remnants of Pleistocene reefs. Two thirds of the park is an enclosed marine basin and the remaining third a coral reef platform with approximately 4,000 patch reefs located shoreward of a long bank reef. The reefs in the park are unique in that they slowly transition from south to north from the large elongate reefs of the lower and middle Florida Keys.

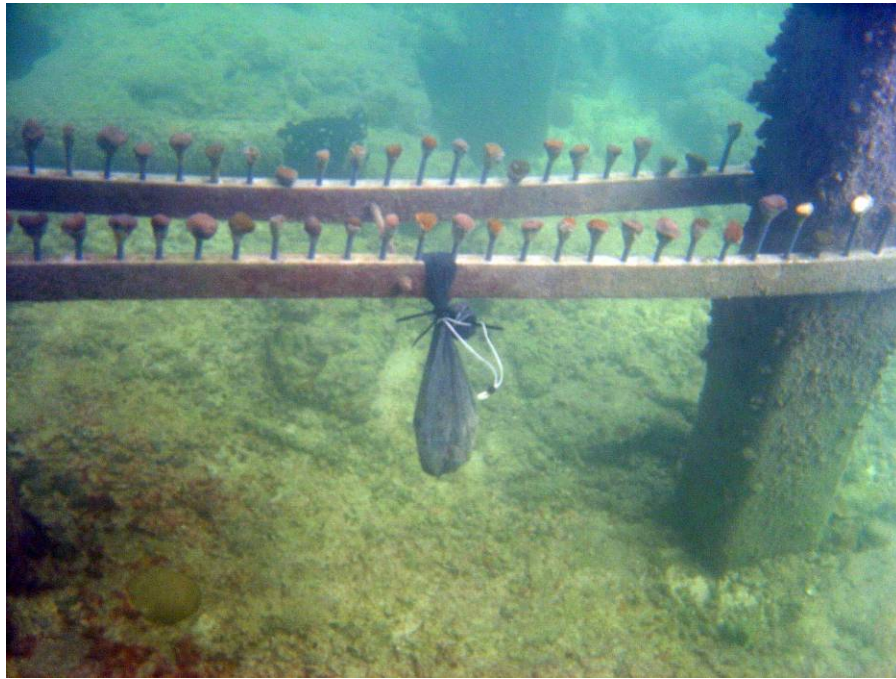


**Erl King, Biscayne NP Shipwreck Trail, ca 2006**

**Dates:** 5 July 2008 (Pre-Symposium) and 12 July 2008 (Post-Symposium)

**Cost:** \$200 includes box lunches, boat travel, transportation to and from Meeting Point. Cost does not include the cost of equipment rental or other incidentals (beverages or souvenirs).

**Trip Leaders:** The team includes Richard Curry (Biscayne NP), Brenda Lanzendorf (Biscayne NP), and Thomas Capo (U of Miami, RSMAS). Curry has been with Biscayne National Park for 32 years, was the Resources Manager of the park, and now serves as the Ocean, Reef and Science Program Manager. Mr. Curry has been developing the Parks hard coral nursery for the past 15 years. Ms. Lanzendorf has been with Biscayne National Park for 8 years and serves as the park Archeologist. Most recently she has been involved with the development of “Shipwreck Trail” in the park as well as documenting a large number of shipwrecks and other maritime historical issues. Mr. Capo has served as the University of Miami’s Experimental Fish Hatchery manager for 30 years. The main focus on the fish hatchery is the production of the pacific Sea Hare, *Aplysia*. Capo is working in cooperation with Biscayne National Park in developing a line of coral to be made available for distribution to the research community.



**Hard coral Nursery, Adams Key, 2006**

**Itinerary:**

- Bus ride to the University of Miami, Experimental fish Hatchery
- Tour through the facilities and a demonstration of cutting mounting and documenting coral fragments (30 minute)
- Boat ride to Boca Chita Cay
- Snorkel over the field nurseries and see how the growth is documented
- Boat ride to Bache Shoal
- Snorkel over healthy and damaged reefs, water depth on the reef is 5-6 feet
- Travel to Long Reef
- Snorkel around the wreck of the “*Mandalay*” one of the sites on the shipwreck trail and lunch
- Snorkel on Marker 3 Reef
- Return to BNP park Headquarters
- Return to Ft. Lauderdale Convention Center

**Meeting Point:** The Fort Lauderdale Convention Center (site of the ICRS)

**Time:** 8:30 AM, EDT on 5 and 12 July 2008

**Transportation:** A bus will be provided to and from the meeting point.

**Number of participants:** Minimum 10, Maximum 45

**Requirements:** There will be an opportunity to snorkel at a number of locations during the tour. Participants have the option to bring their own gear or to rent equipment from the concessionaire. Water Temperatures are expected to be 24° to 30° C (75° to 85°F).

**If you have questions or need additional information please contact:**

Richard Curry, 305-230-1144, extension 3006, richard\_curry@nps.gov  
Susan Gonshor, 305-230-1144, extension 3019, susan\_gonshor@nps.gov