

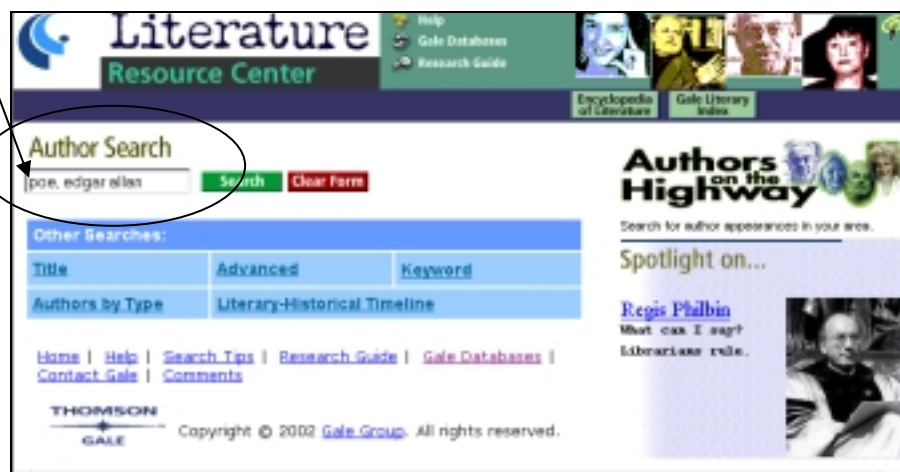
ALVIN SHERMAN LIBRARY, RESEARCH, AND INFORMATION TECHNOLOGY CENTER

LITERATURE RESOURCE CENTER

- **Full text** of literary criticism, book reviews, biographical and critical essays about writers and their works
- Can search by **title** of work, **author**, and **keyword**

AUTHOR SEARCH

To find biographical and critical essays about an author, type in the author's name in the **Author Search** box and click the green **Search** button, as illustrated below.

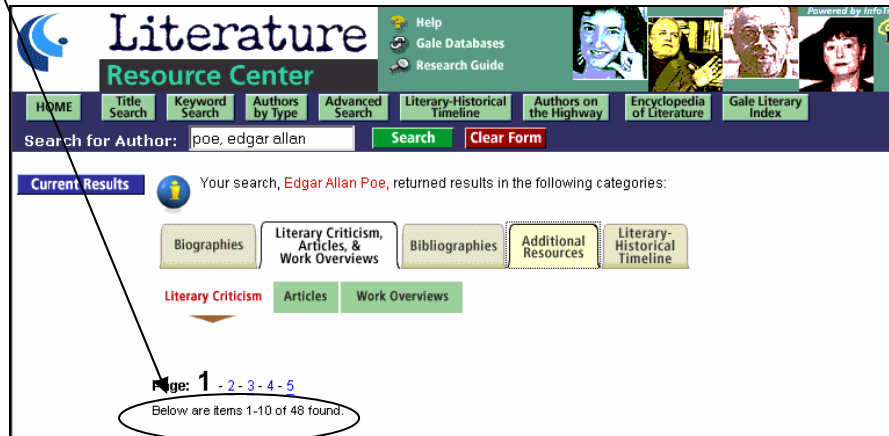


You will get a screen that looks like the one below. Notice that the series of tabs across the top of the screen and that **Biographies** tab is highlighted in white. If you scroll down farther, you will see blue underlined titles of biographical essays about Edgar Allan Poe. You can click on these links to see the full text of these essays.



3100 Ray Ferrero, Jr. Boulevard • Fort Lauderdale, Florida 33314-7796 • www.nova.edu/library

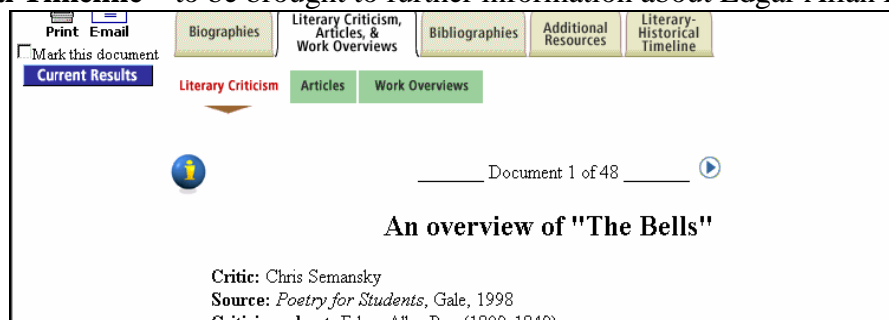
If you click on the **Literary Criticism, Articles & Work Overviews** tab, you will see links to 10 of 48 critical essays, articles and work overviews of Edgar Allan Poe.



If you scroll down, you will see the **complete citations** to these full-text works. Notice that you can navigate through the five pages of citations by clicking on the blue **underlined page numbers** at the top.

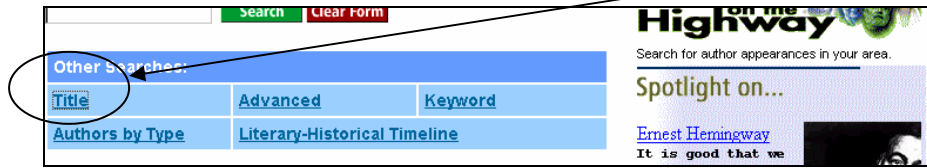


If you **click** on one of the links, you will be brought to the **full text**. Refer to the screen below for an example. Below you will see the full text of the first citation in the results list. Notice that you can **Print** or **Email** this document. Notice also that you can click on other tabs – **Biographies**, **Bibliographies**, **Additional Resources**, and **Literary-Historical Timeline** – to be brought to further information about Edgar Allan Poe.



LITERATURE RESOURCE CENTER TITLE SEARCH

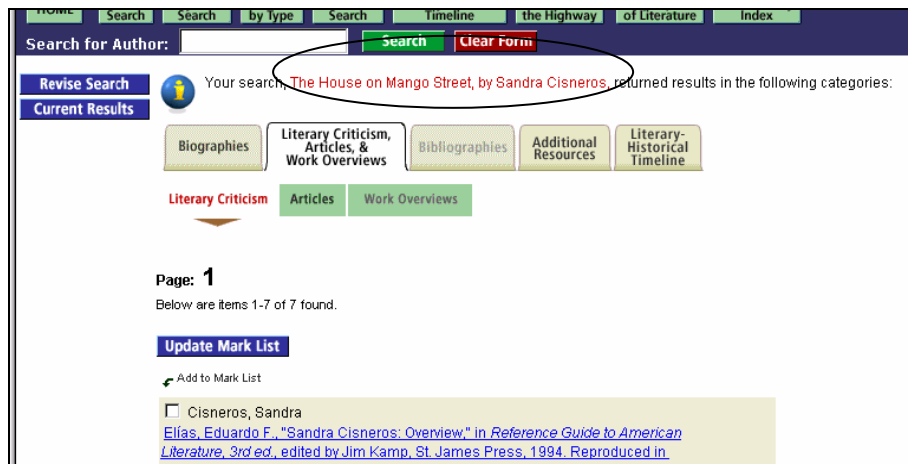
You can also search for information about a specific work by clicking on **Title** on the main search page.



You will be brought to a search screen where you can type in the title of the work. If you are sure that what you typed is the exact title, change the radio button from “Any words entered” to “Exact title.” Click **Search**.



As you can see below, you are directed to **Literary Criticism, Articles & Work Overviews** about the title you entered. Notice in red at the top, your title and its author are identified. From this screen, you can click on any one of the seven blue underlined **Literary Criticism, Articles & Work Overviews** citations, or you can select the **Articles** sub-tab to view links to full-text articles, including **book reviews** when available, about the work. Notice that you can also choose to view biographical information about the author by clicking on the **Biographies** tab.



LITERATURE RESOURCE CENTER ADVANCED SEARCH

In an **Advanced Search**, you have the option to combine keywords, titles, critics, and authors in any number of ways. You may also limit to **Document Type**, such as **topical essay** or **work overview**.

Note: It is recommended that you do **not** search by **database** unless you are familiar with its print companion.

Advanced Search

Enter search term(s) and select index type.
Indicate choice of Boolean operators (AND, OR, NOT).

in Author-name contains AND

in Author-name contains AND

in Author-name contains

Limit the current search (optional)

Document Type: Interview, Topical Essay, Website List, Work Overview

Database: Scribner Writers Series, Twayne's English Authors, Twayne's US Authors, Twayne's World Authors

ADVANCED SEARCH TIPS

To conduct an **Advanced Search** to find a theme in a particular work, type the title of the work in the first box and change the **pull-down menu** to **Title-exact match**. Then type the theme (in this case it is "evil") into the second box and change the **pull-down menu** to **keyword**. Click **Search**.

Literature Resource Center

HOME Title Search Keyword Search Authors by Type **Advanced Search** Literary-Historical Timeline Authors on the Highway Encyclopedia of Literature Gale Literary Index

Advanced Search

Enter search term(s) and select index type.
Indicate choice of Boolean operators (AND, OR, NOT).

lord of the flies in Title-exact match AND

evil in Keyword AND

in Author-name contains

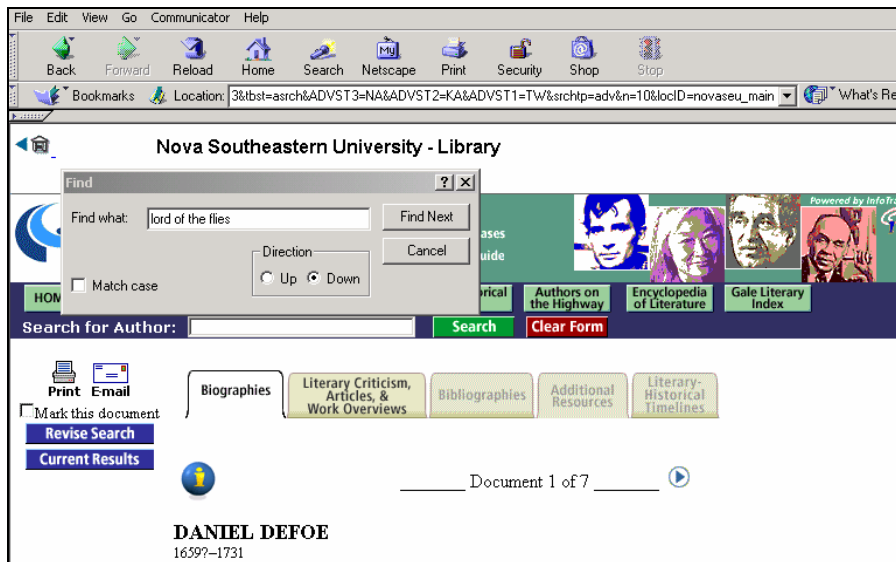
Below is the list of results for this search.



EVALUATE YOUR CITATIONS

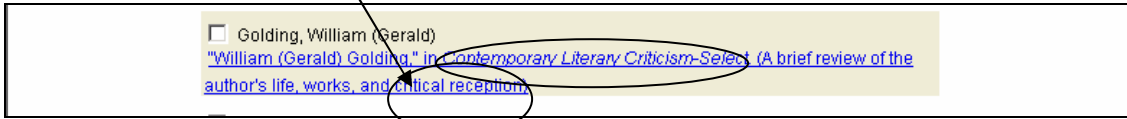
In Literature Resource Center, sometimes you must **evaluate your citations** to determine the best fit for your needs. You can do this in a number of ways. Here are a few:

1. After selecting one of the citations from the list by clicking on it, **use your browser** to search the full text of the article to determine where your search terms are mentioned. Choose **Edit>Find in Page** or **Search>Find in Page**, then type your search terms in the box. Each time you click **"Find Next,"** you will be brought to each place in the full-text that mentions "Lord of the Flies." You will have to read the text to determine if the article is appropriate for your needs.



2. Look at the title of the book or journal in which the article appeared.

In our example, the third citation looks promising: it mentions the author of the work and is taken from a critical work called *Contemporary Literary Criticism-Select*, and it tells us that the full-text contains a brief critical reception of the author.



3. Choose another available tab.

For example, if you are looking for critical articles, not biographies, click on the **Literary Criticism, Articles & Work Overviews** tab. (Literature Resource Center will always bring you to the **Biographies** tab first, when it is available.) Scroll through the list of results and look for a citation that looks relevant to your research needs. In this example, the third, fourth, and fifth citations are exclusively about William Golding's *Lord of the Flies*, so they look promising.

